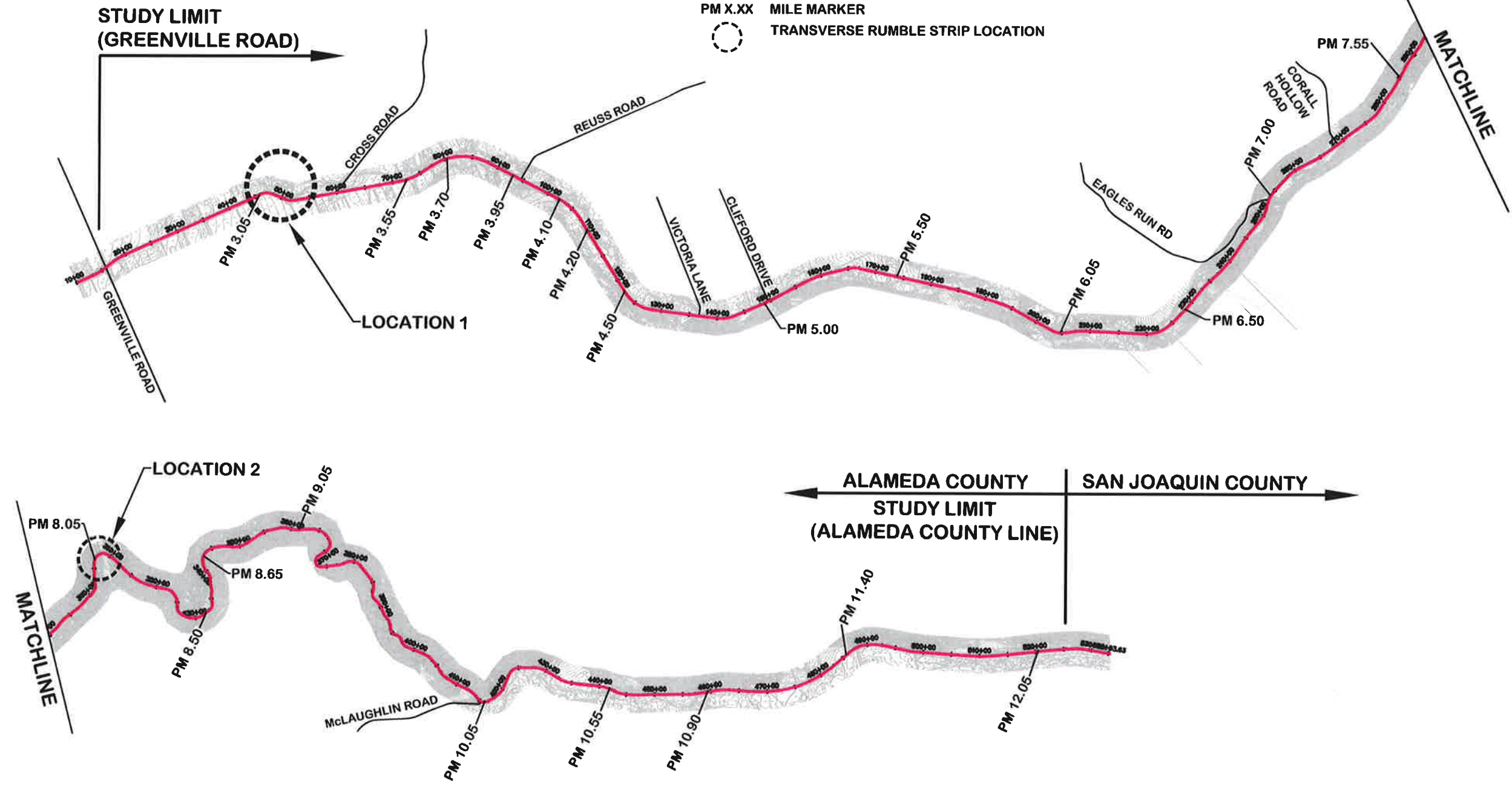


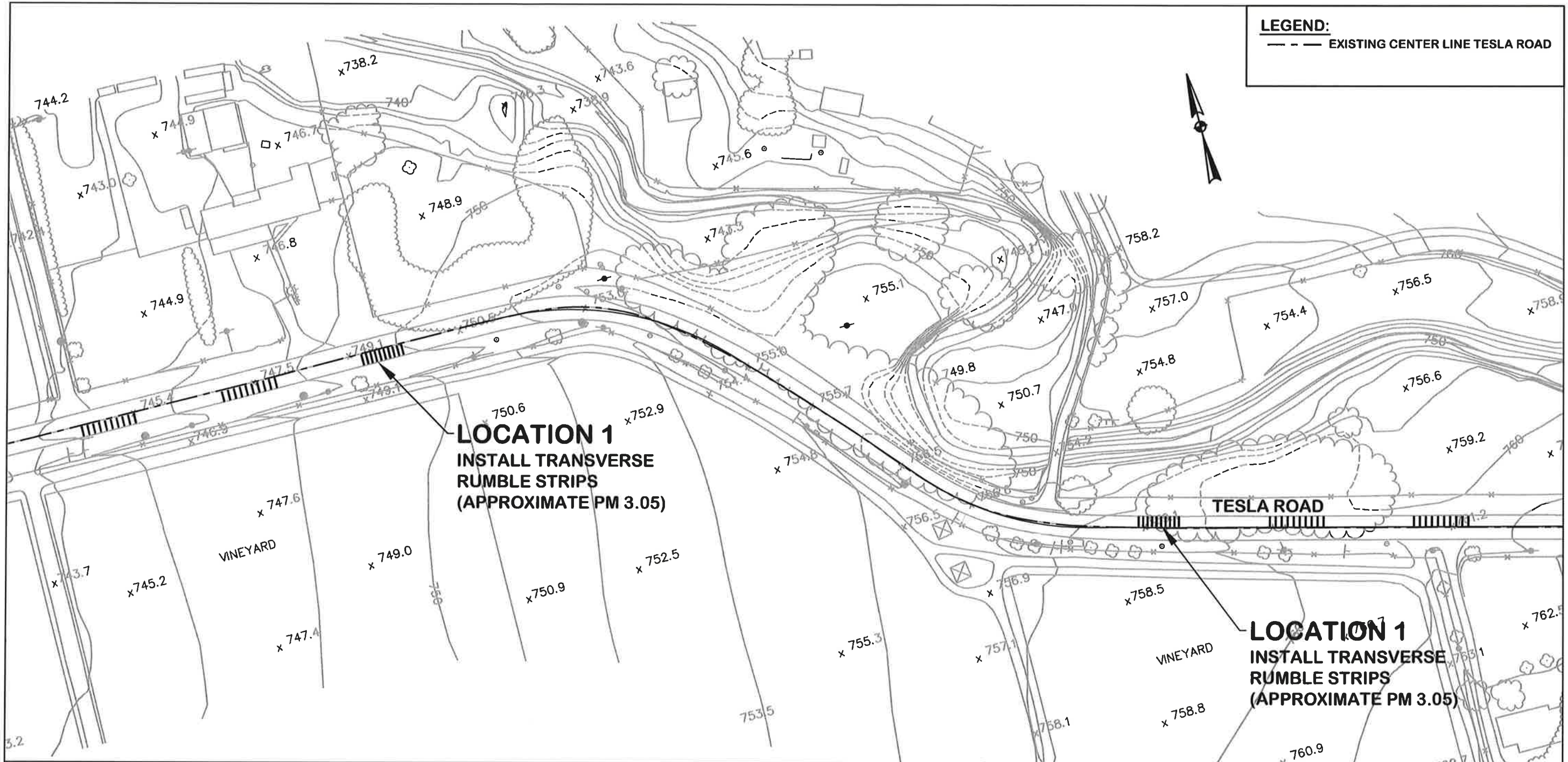
- LEGEND:**
-  EXISTING TESLA ROAD
 -  PM X.XX MILE MARKER
 -  TRANSVERSE RUMBLE STRIP LOCATION



TYLIN INTERNATIONAL

**NEAR TERM IMPROVEMENT - EXHIBIT 11
TRANSVERSE RUMBLE STRIP**

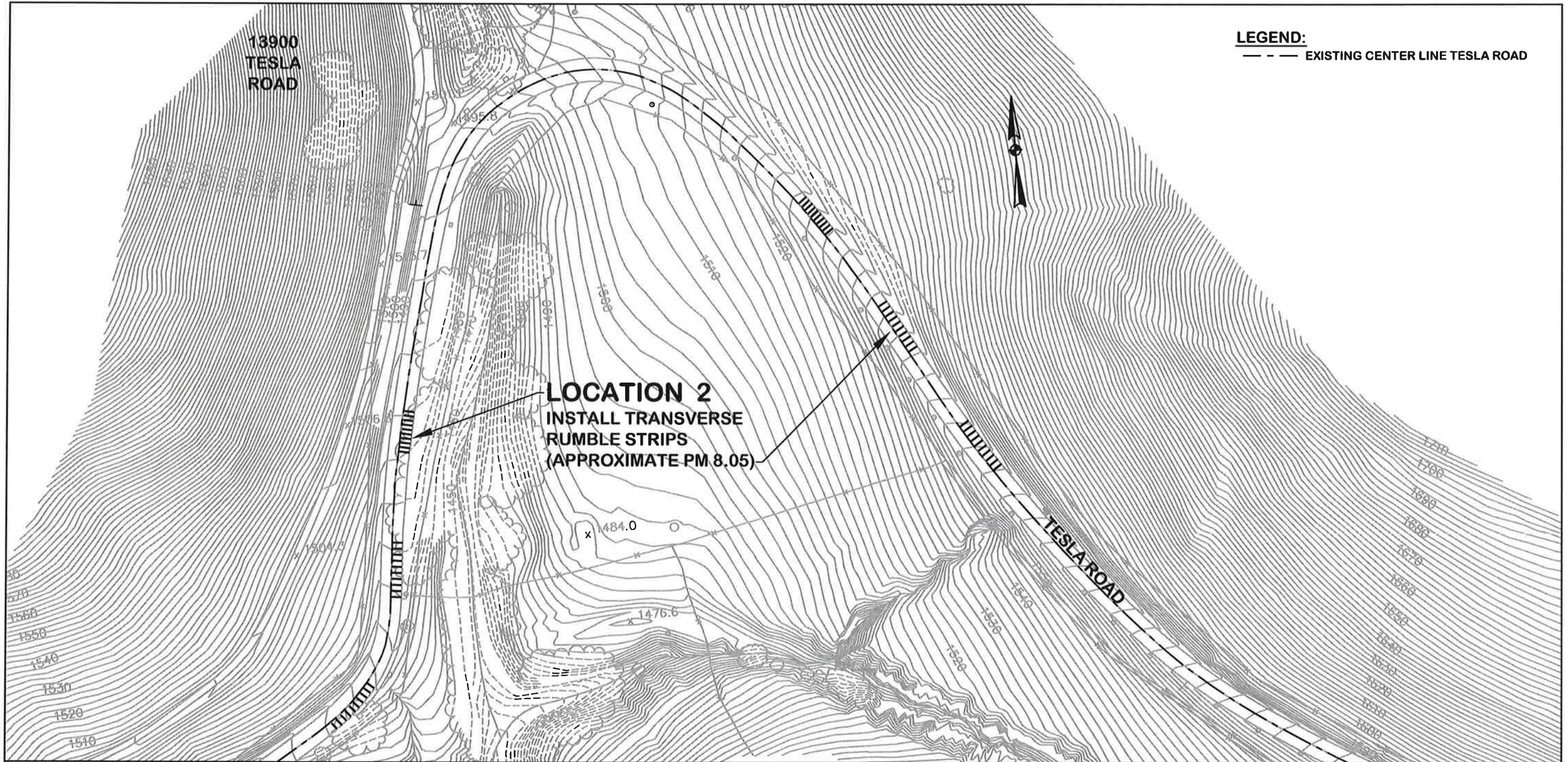
**TESLA ROAD
SAFETY STUDY
EXHIBIT 11**

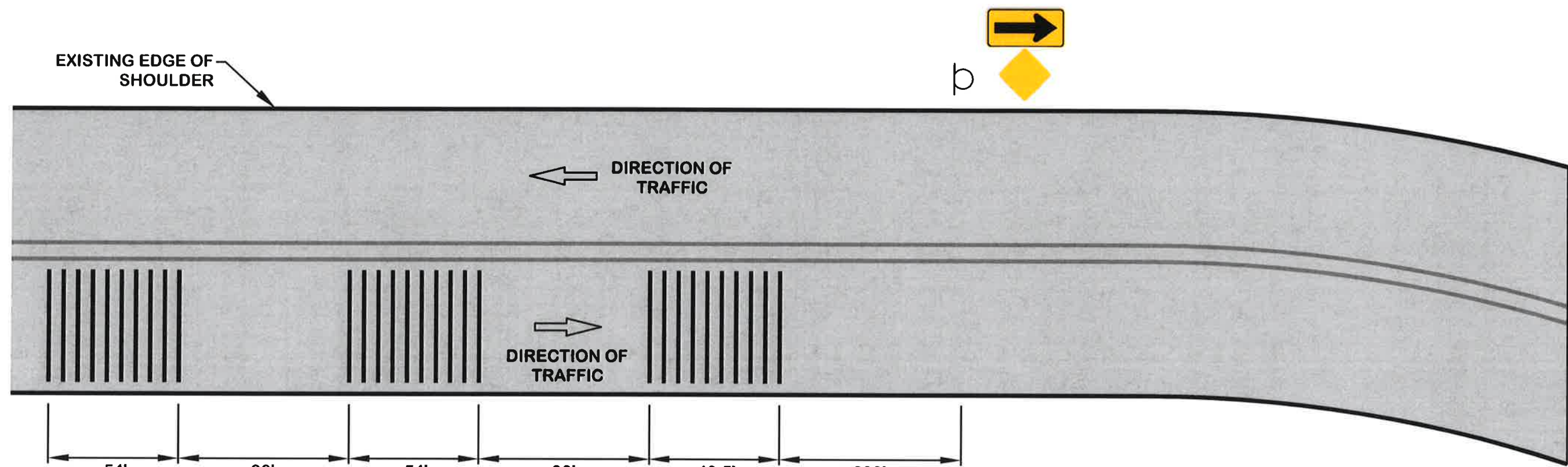


LEGEND:
 --- EXISTING CENTER LINE TESLA ROAD

LOCATION 1
 INSTALL TRANSVERSE
 RUMBLE STRIPS
 (APPROXIMATE PM 3.05)

LOCATION 1
 INSTALL TRANSVERSE
 RUMBLE STRIPS
 (APPROXIMATE PM 3.05)





54'
PROPOSED
RUMBLE STRIP
SEE DETAIL A

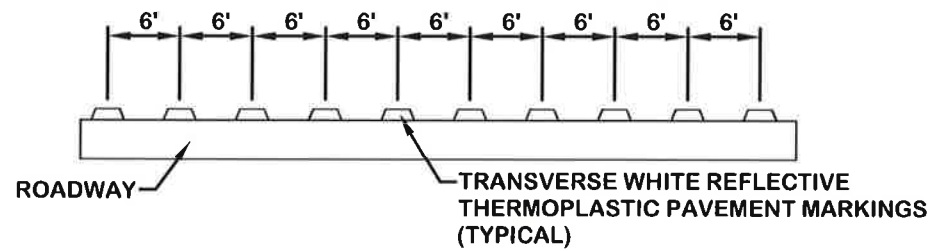
90'

54'
PROPOSED
RUMBLE STRIP
SEE DETAIL A

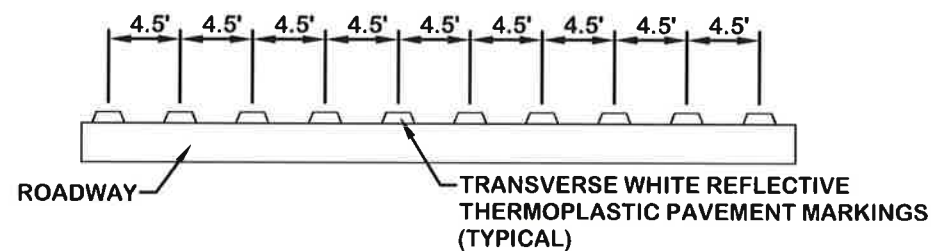
90'

40.5'
PROPOSED
RUMBLE STRIP
SEE DETAIL B

200'



RUMBLE STRIP DETAIL A
NOT TO SCALE



RUMBLE STRIP DETAIL B
NOT TO SCALE



TYLIN INTERNATIONAL

**NEAR TERM IMPROVEMENT - EXHIBIT 11
TRANSVERSE RUMBLE STRIP**

**TESLA ROAD
SAFETY STUDY
EXHIBIT 11**