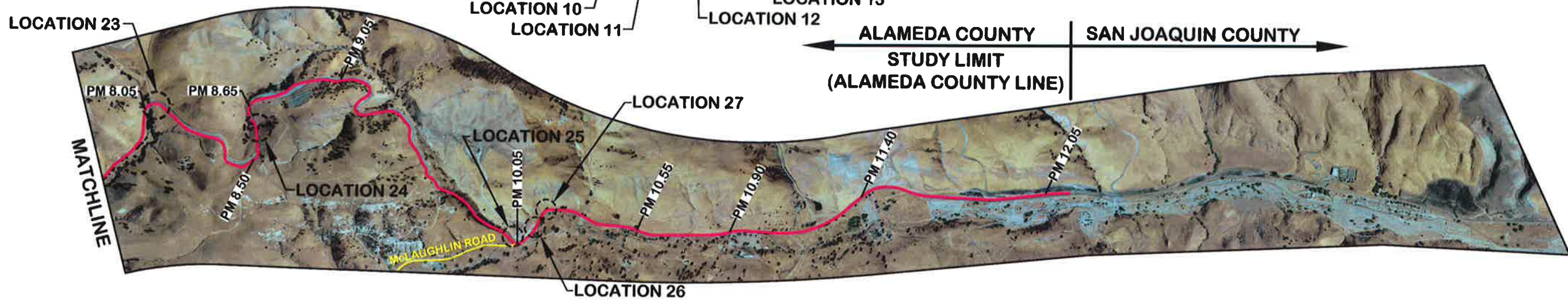
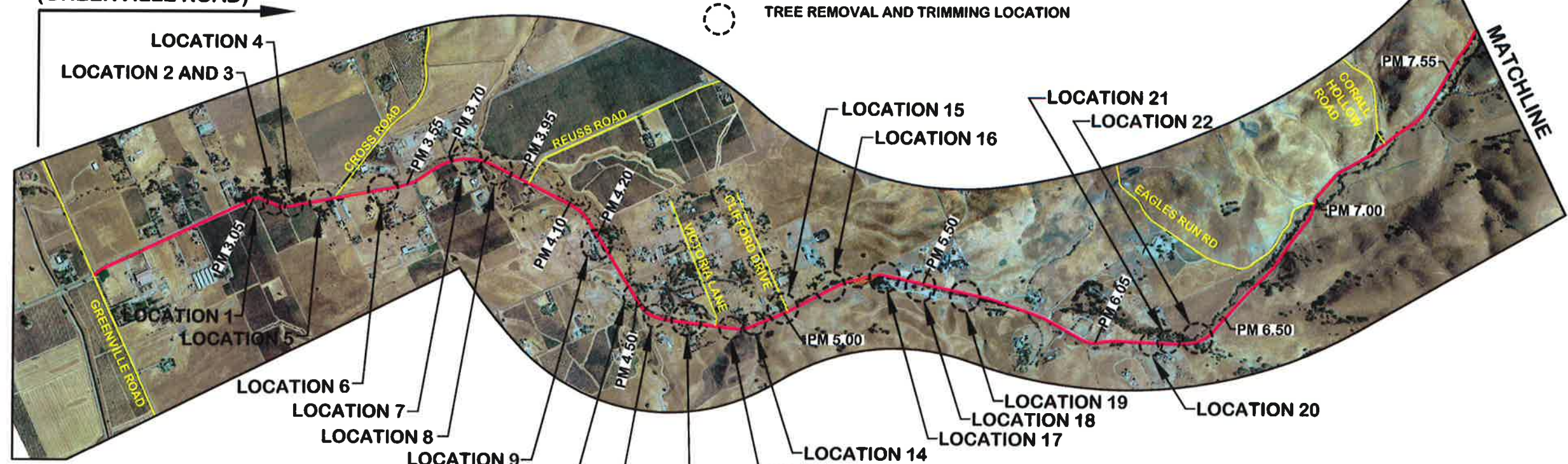


STUDY LIMIT  
(GREENVILLE ROAD)

**LEGEND:**

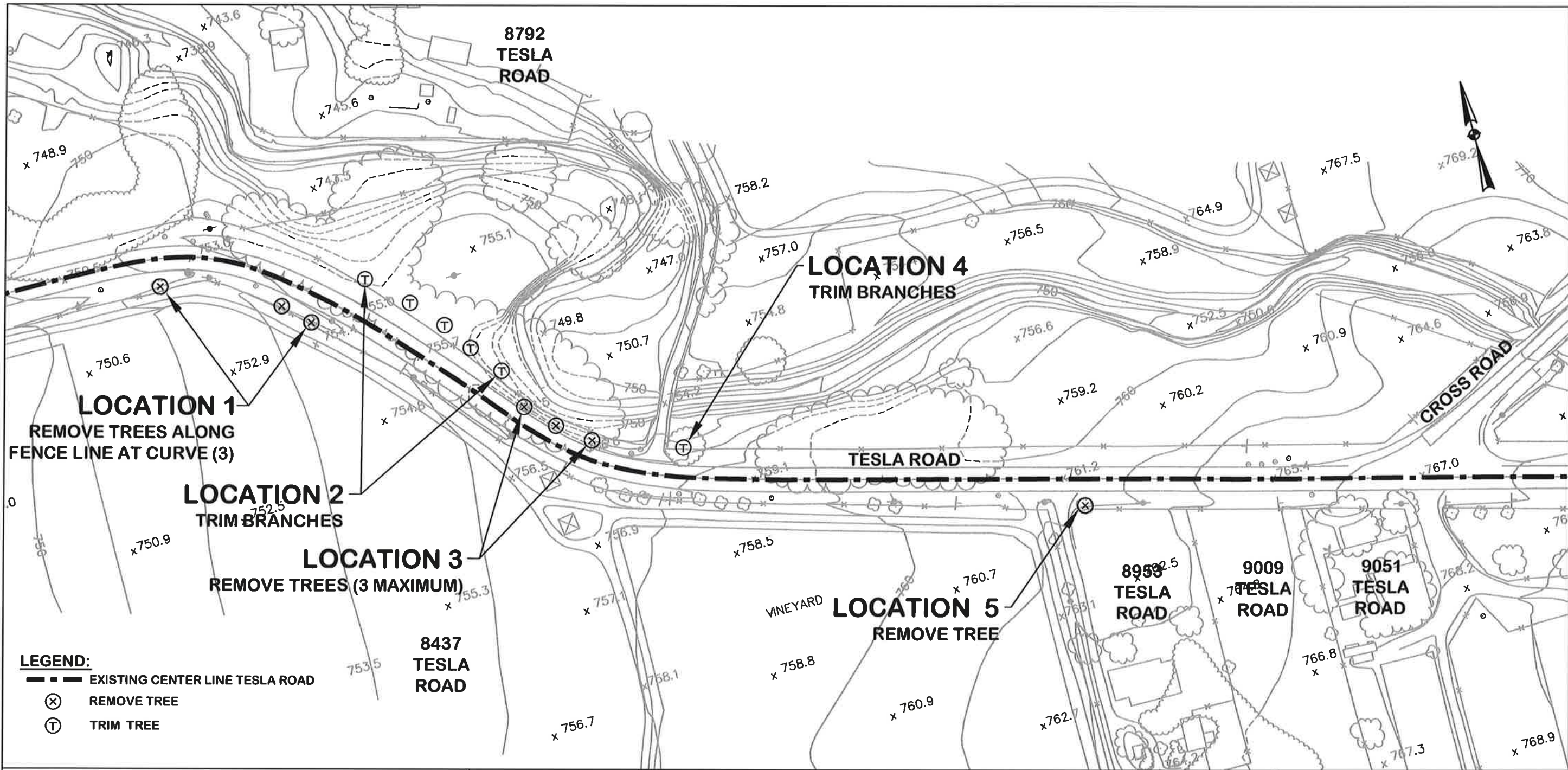
-  EXISTING TESLA ROAD
-  PM X.XX MILE MARKER
-  TREE REMOVAL AND TRIMMING LOCATION



ALAMEDA COUNTY | SAN JOAQUIN COUNTY

STUDY LIMIT  
(ALAMEDA COUNTY LINE)





**TYLIN** INTERNATIONAL

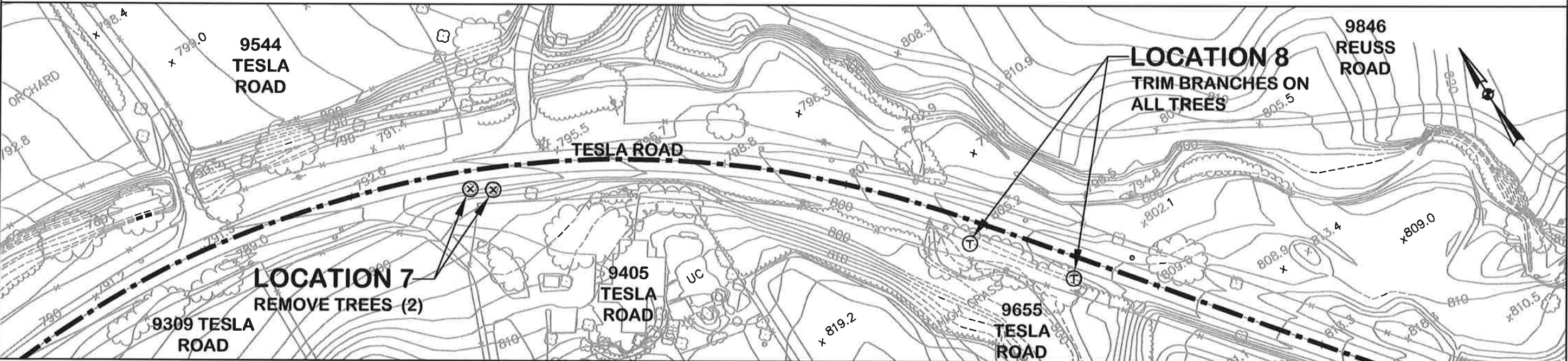
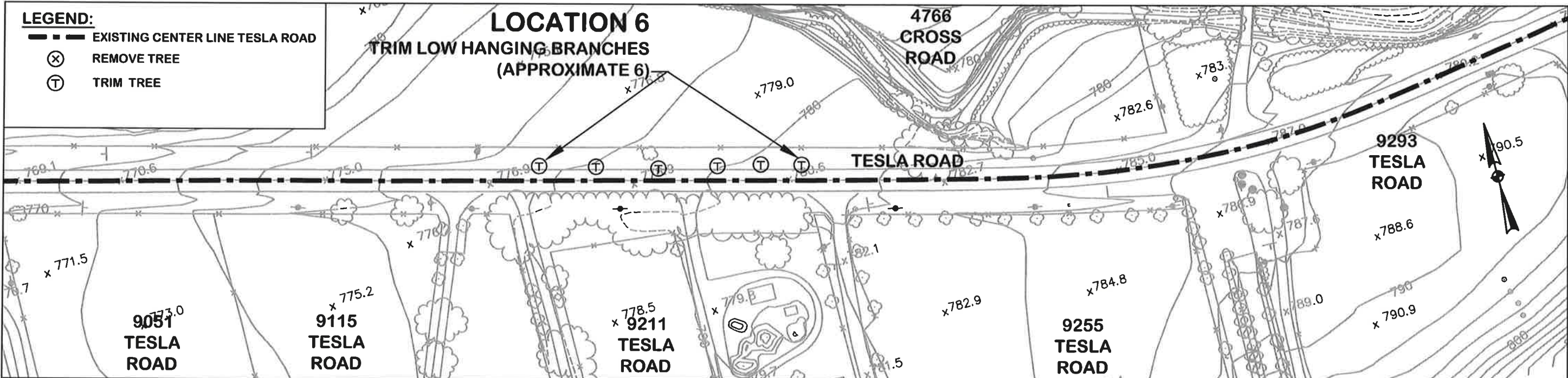
**NEAR TERM IMPROVEMENT - EXHIBIT 4**  
**TREE REMOVAL AND TRIMMING**  
**LOCATIONS 1 TO 5**

**TESLA ROAD**  
**SAFETY STUDY**  
**EXHIBIT 4**

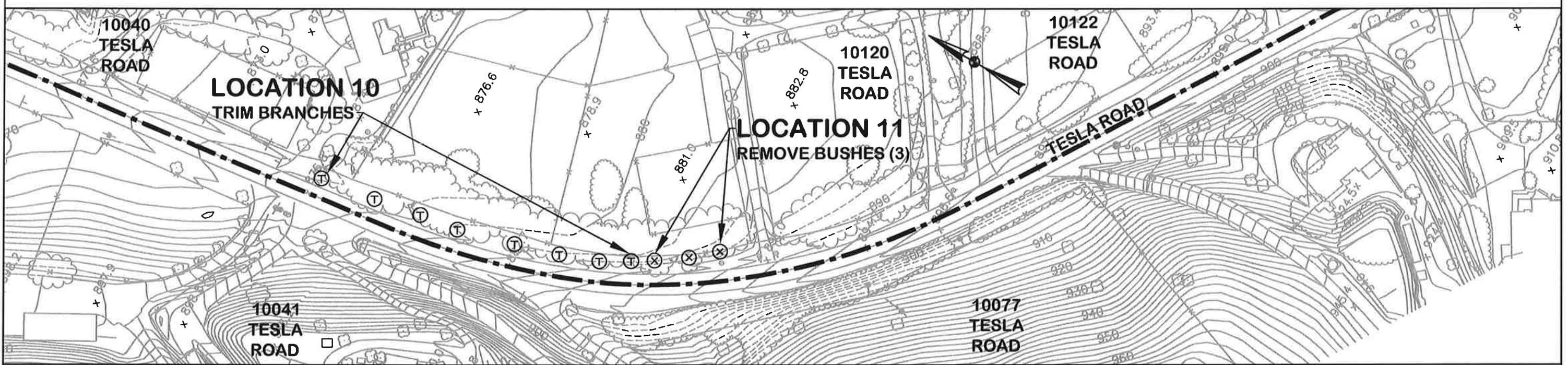
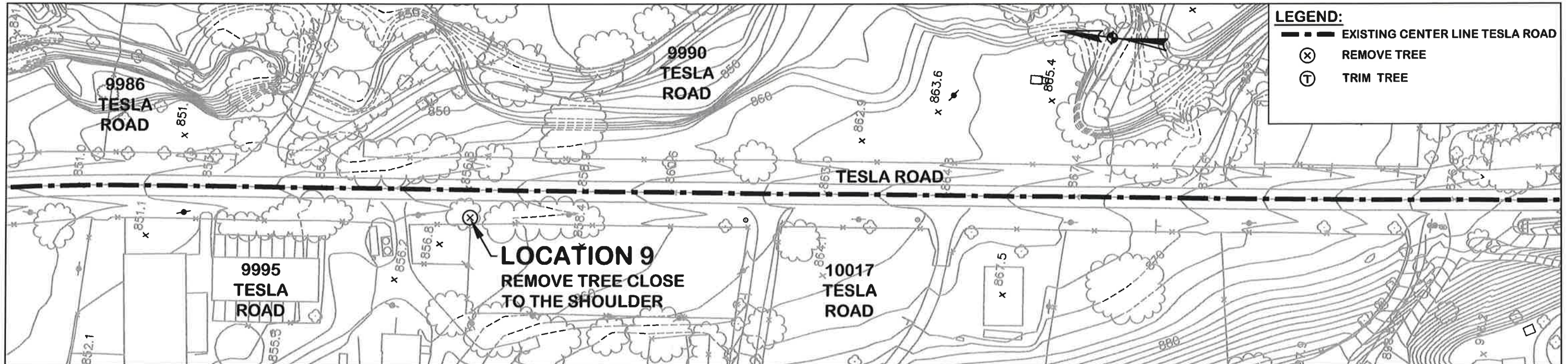


**LEGEND:**

- EXISTING CENTER LINE TESLA ROAD
- ⊗ REMOVE TREE
- ⊕ TRIM TREE





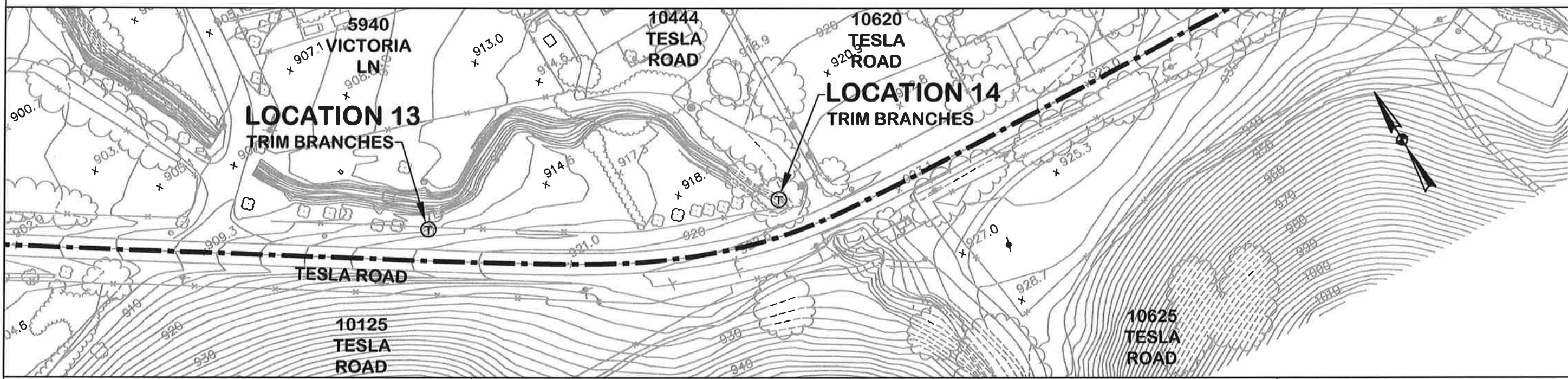
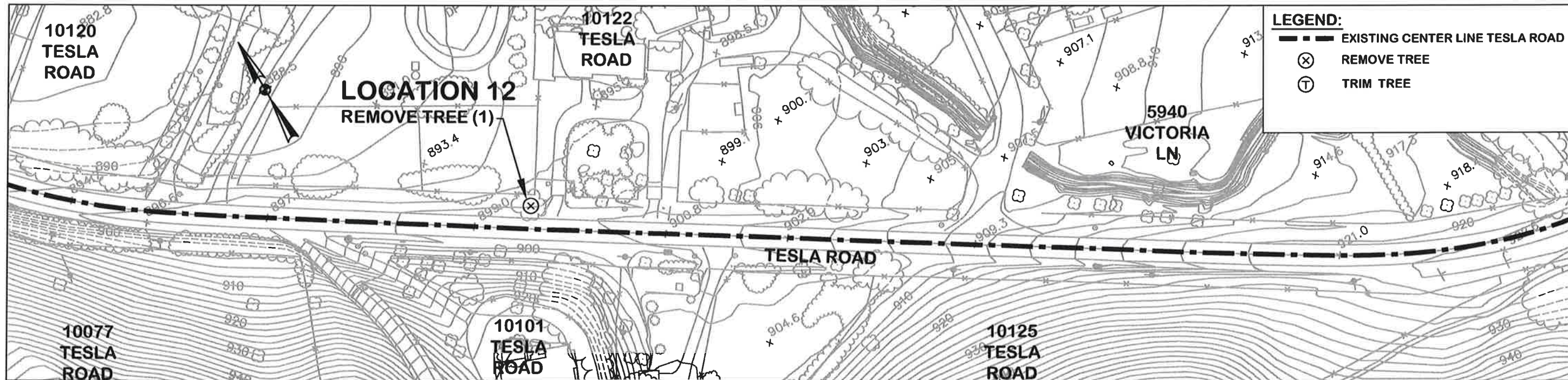


**TYLIN** INTERNATIONAL

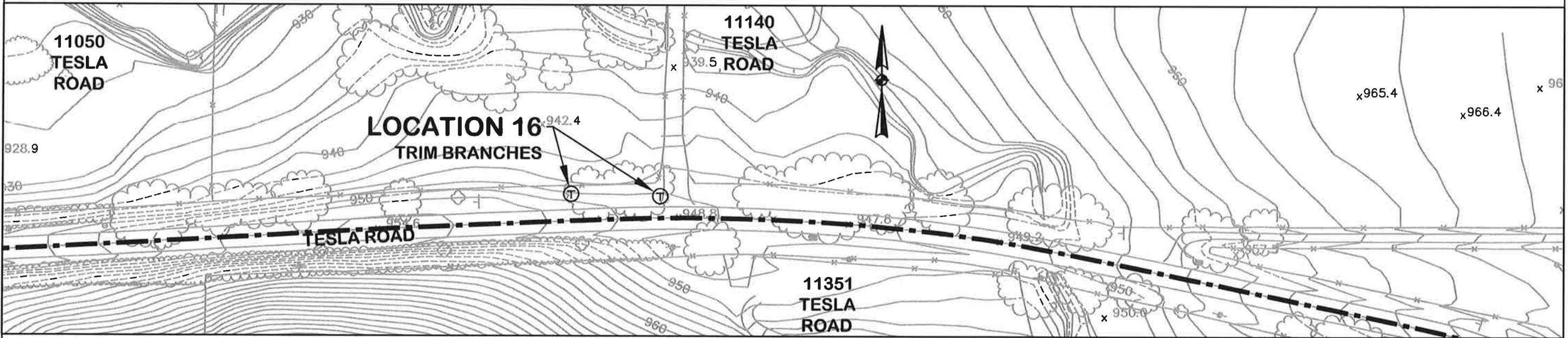
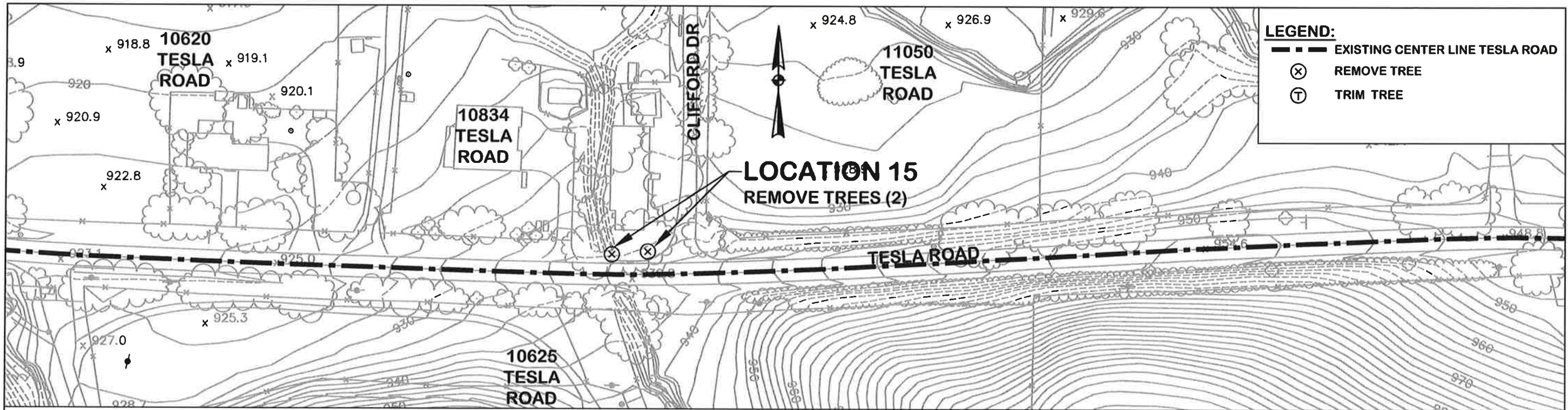
**NEAR TERM IMPROVEMENT - EXHIBIT 4  
 TREE REMOVAL AND TRIMMING  
 LOCATIONS 9 TO 11**

**TESLA ROAD  
 SAFETY STUDY  
 EXHIBIT 4**

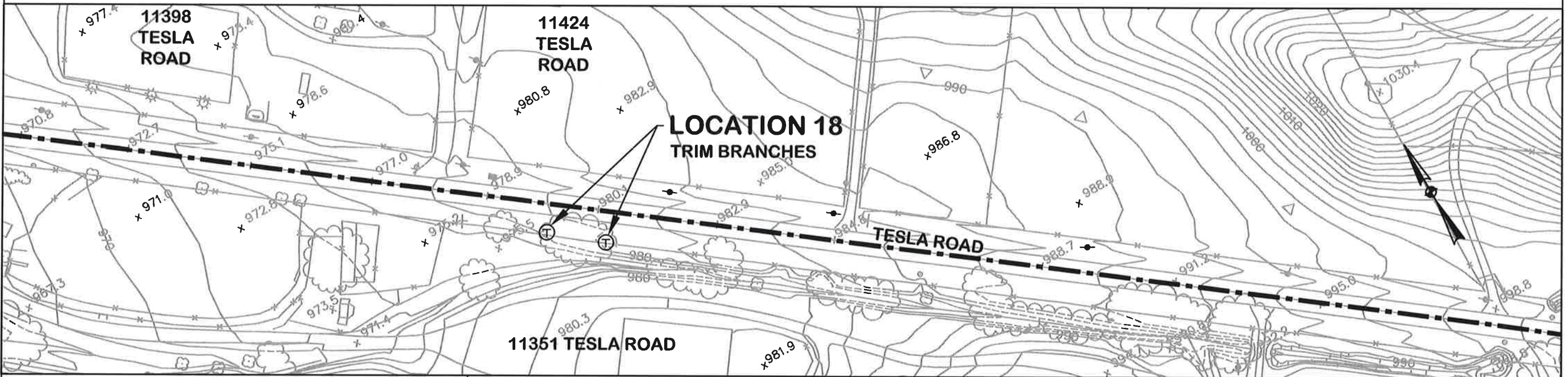
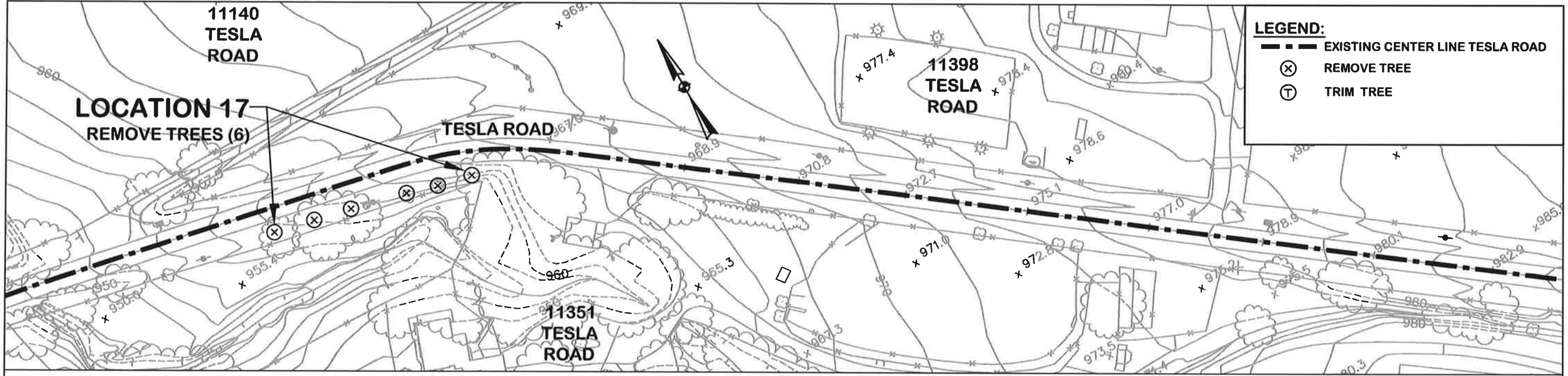




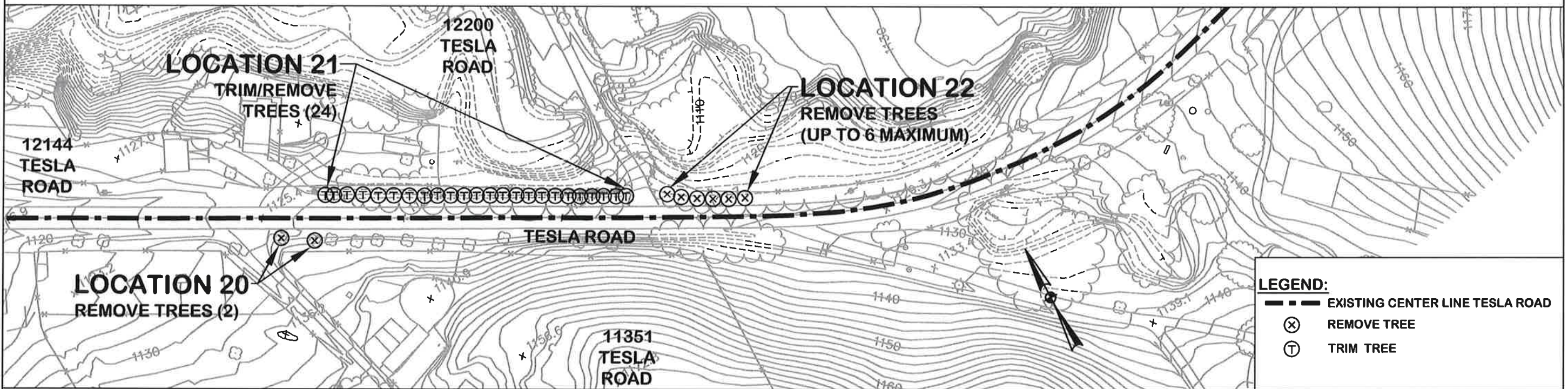
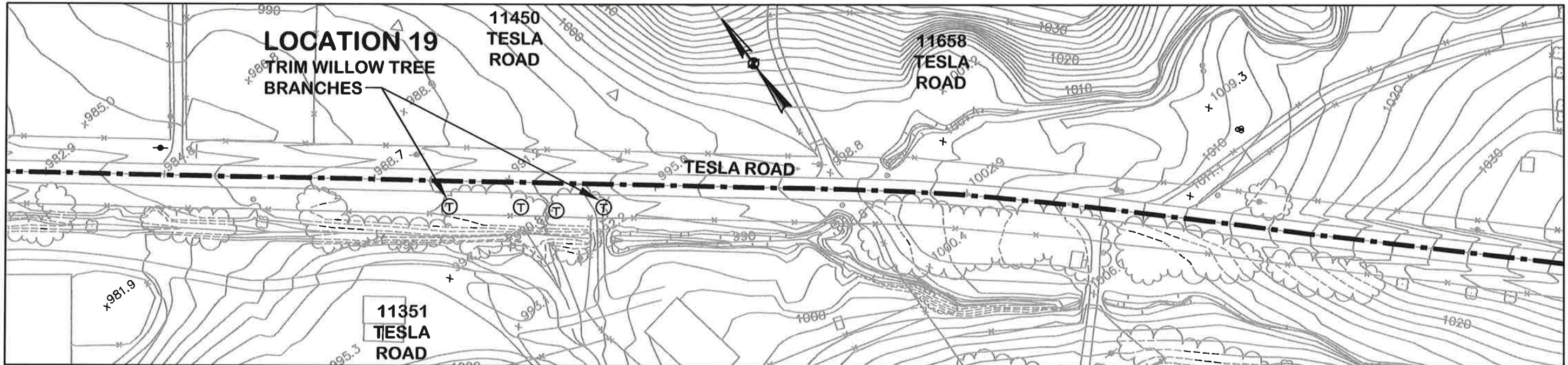








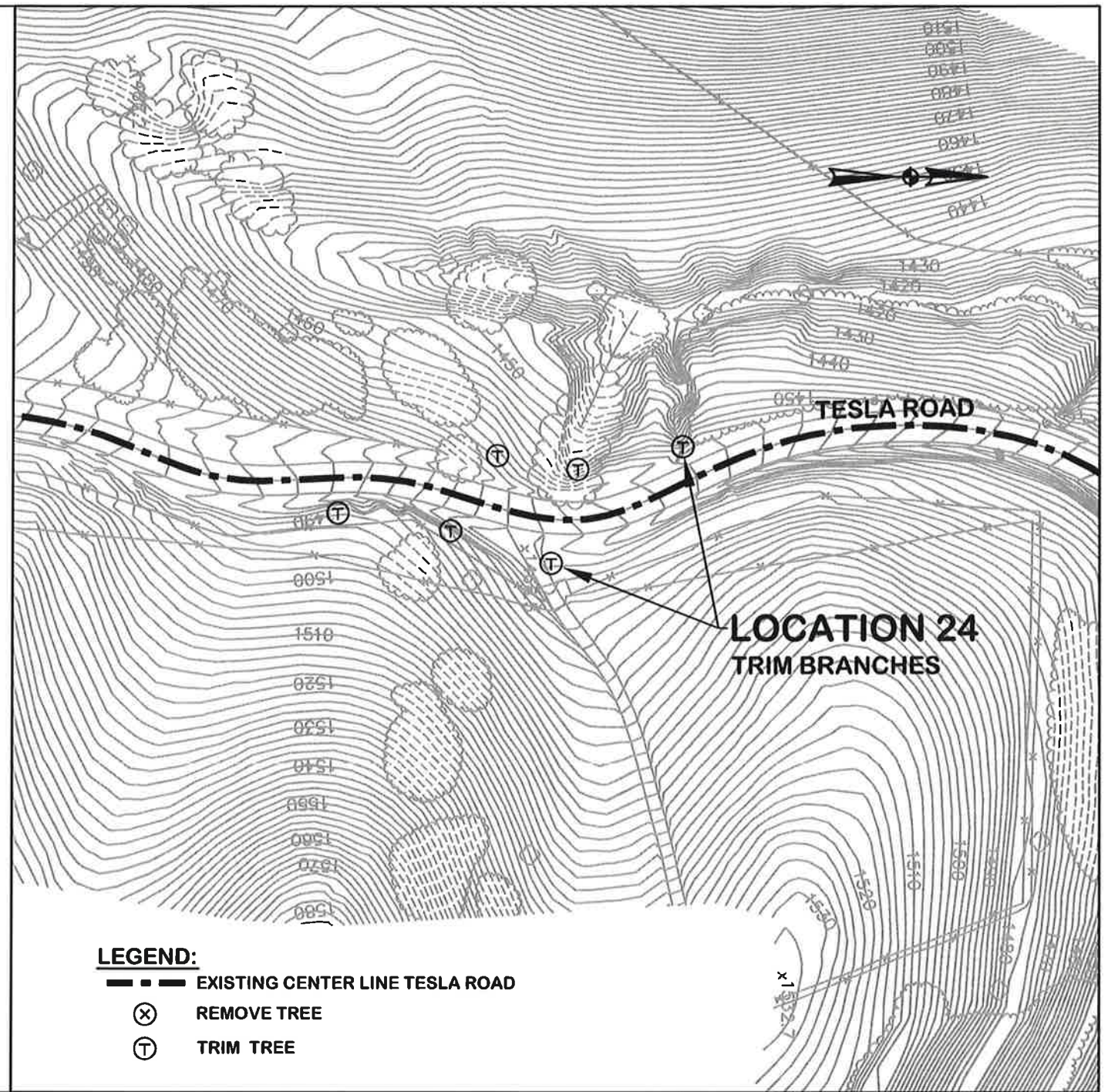
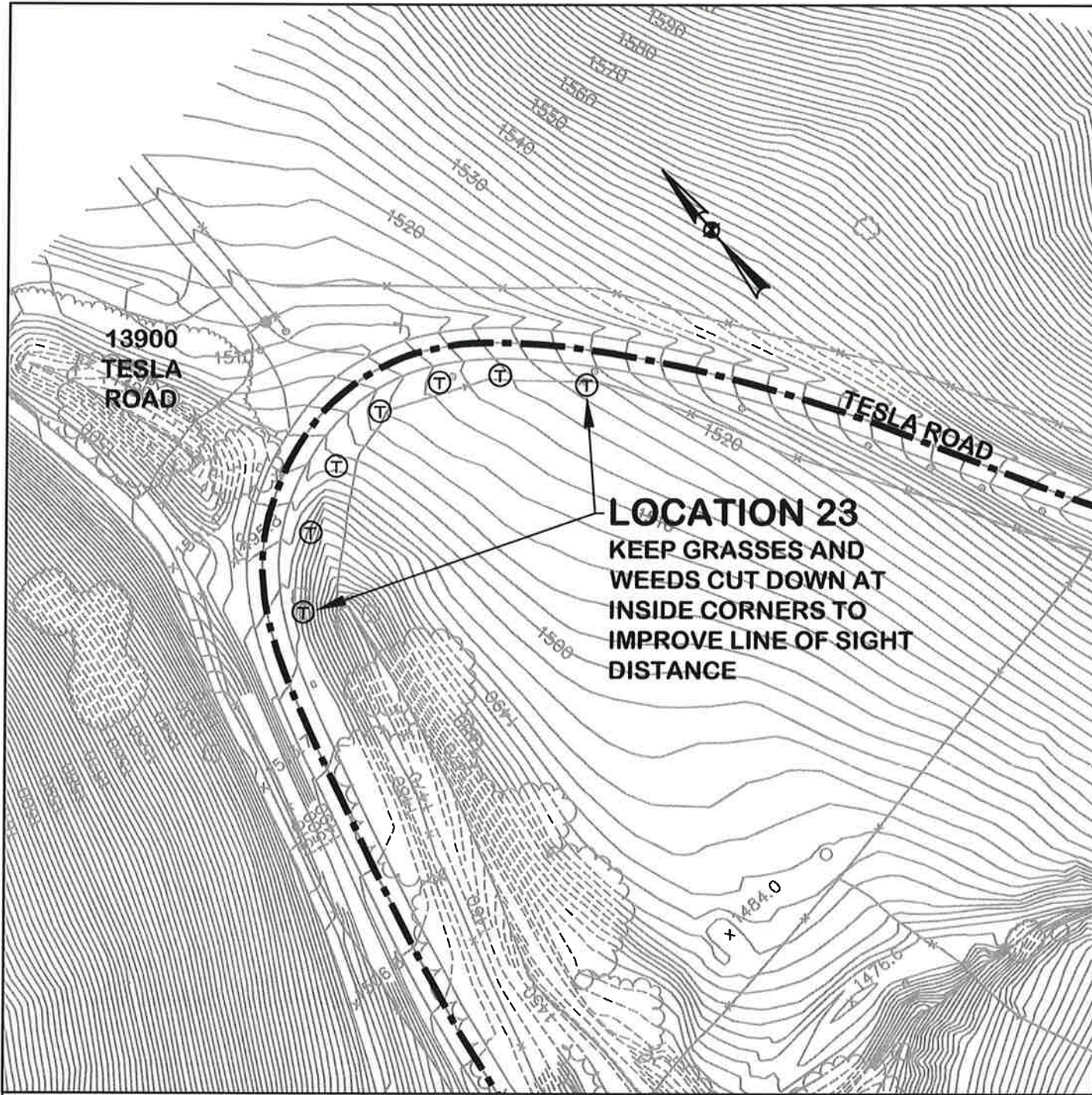




**LEGEND:**

	EXISTING CENTER LINE TESLA ROAD
	REMOVE TREE
	TRIM TREE





- LEGEND:**
- EXISTING CENTER LINE TESLA ROAD
  - ⊗ REMOVE TREE
  - Ⓣ TRIM TREE



**TYLIN** INTERNATIONAL

**NEAR TERM IMPROVEMENT - EXHIBIT 4  
TREE REMOVAL AND TRIMMING  
LOCATIONS 23 TO 24**

**TESLA ROAD  
SAFETY STUDY  
EXHIBIT 4**

SHEET 9 OF 10

MAY 2015



