

HESPERIAN BLVD STREETScape IMPROVEMENT PROJECT UPDATE SAN LORENZO, CA



September 17, 2015

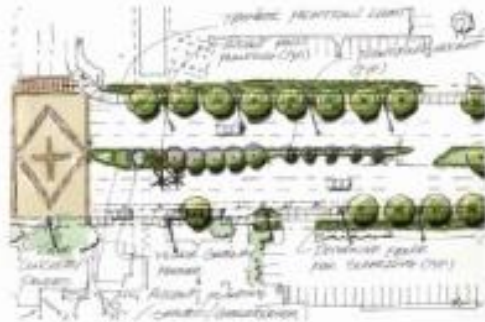


MEETING PURPOSE



- Brief Project Overview
- Construction Schedule
- Design Update

BACKGROUND



Grant Avenue to Paseo Grande Avenue



Theater District

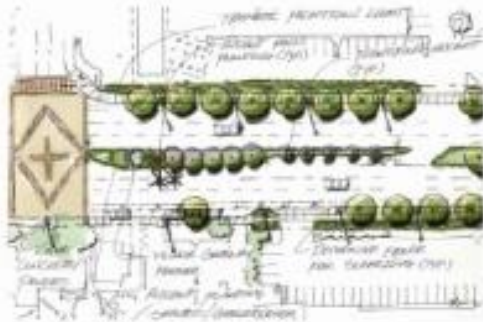


Gateway Feature

Hesperian Corridor Streetscape Master Plan 2003

- 2003: Hesperian Corridor Streetscape Master Plan adopted
- 2008: Project Phase I started
- 2010-2013 Funding of undergrounding and State dissolves Redevelopment Agency, project delayed
- 2014: Funding available to complete the entire project from Hwy 880 to Hayward city limits.

OUTREACH EFFORTS



Grant Avenue to Paseo Grande Avenue



Theater District



Gateway Feature

Hesperian Corridor Streetscape Master Plan 2003

- 2008 SLZ Village Homes Community Meeting 1
- 2008 Subcommittee
- 2008 SLZ Village Homes Community Meeting 2
- 2009 SLZ Village Homes Community Meeting 3

- October 2014: SLZ Village Homes Meeting 4

- 2015: Ongoing Business outreach & concurrence with Castro Valley Eden Chambers of Commerce

- Tonight: SLZ Village Homes Update

HESPERIAN BLVD STREETScape PROJECT

SAN LORENZO, CA

September 2015

PROJECT LIMITS

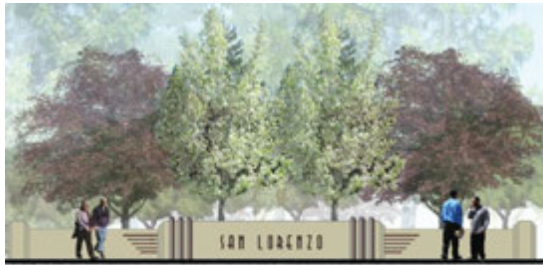


PROJECT FEATURES



- Complete Streets
- Fiber optic conduit for future use.
- Pedestrian-scale lighting
- Street trees/Drought tolerant planting
- San Lorenzo gateway features
- Intersection improvements
- Pavement rehabilitation
- Utility undergrounding
- Adaptive signal control technology (ASCT)
- Transit priority system with AC Transit

PROJECT FEATURES



Enlargement

Primary Gateway at Embers Way and Hwy 880

SAN LORENZO

 Concrete: Light Warm-Gray

 Accent: Burgundy

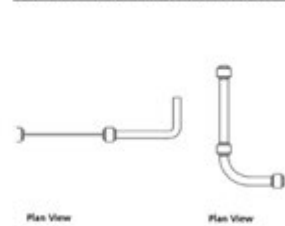
 Text: Dark Bronze

 Color Palette



Enlargement

Seatwalks and Fencing at Corner Bulb-outs and Plazas



Side Elevation View



Front Elevation View



Plan View
Village Gateway Sign in Center Median at Post Office Drive
(Gateway design can also be applied to County property at Via Alaminos and Grant)

COMMUNITY IDENTITY ELEMENTS

Hesperian Blvd Streetscape Project



Plan View



D.M. Braun & Company
 City Bench
 Color: Black Powder Coat Finish

Bench



Earl Jordan Iron Works
 BEE7 Meshgrate
 Recycled Material (85%)
 Color: Natural Finish

Tree Grate



Double Arm, H=22'
 Color: Black Powder Coat Finish

Street Light



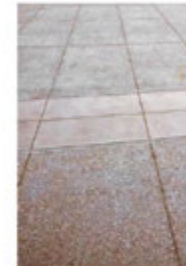
Antique Beige



Canyon Pink

Integral Color: Pink or Beige

Colored Concrete Accents



Color: Gray Concrete with Reddish Address

Textured Concrete Pavement



Street Print - Color: Reddish Blend

Colored Textured Asphalt



Forms and Surfaces
 Custom Urban Renaissance
 Double Door Urban and Recycling Receptacle
 Color: Black Powder Coat Finish

Trash Receptacle



Pat Weather
 8-48 Bollard
 Color: Black Powder Coat Finish

Bollards



Steel Furniture Australia or equal
 3mm x 3mm Hoop
 Color: Black Powder Coat Finish

Bike Rack

MATERIALS AND FURNISHINGS

Hesperian Blvd Streetscape Project



DECORATIVE PAVING + COLORS

Hesperian Blvd Streetscape Project



2015 PROGRESS



- Optimize Design Features
- Incorporate Community Comments
- Finalize Engineering Documents for Construction
- Coordinate with PG&E/Utilities Underground design
- Business Outreach
- Permissions to Conform



HESPERIAN BLVD STREETScape PROJECT

SAN LORENZO, CA

September 2015



SCHEDULE



- Complete Project Design December 2015
- Begin Construction Spring/Summer 2016
- Complete Construction December 2019

CONSTRUCTION CONSIDERATIONS



- Order of Work
 - Median Undergrounding
 - Streetscape
- Maintain access to businesses during construction
- Holiday schedule (No construction Thanksgiving to Jan 2016)

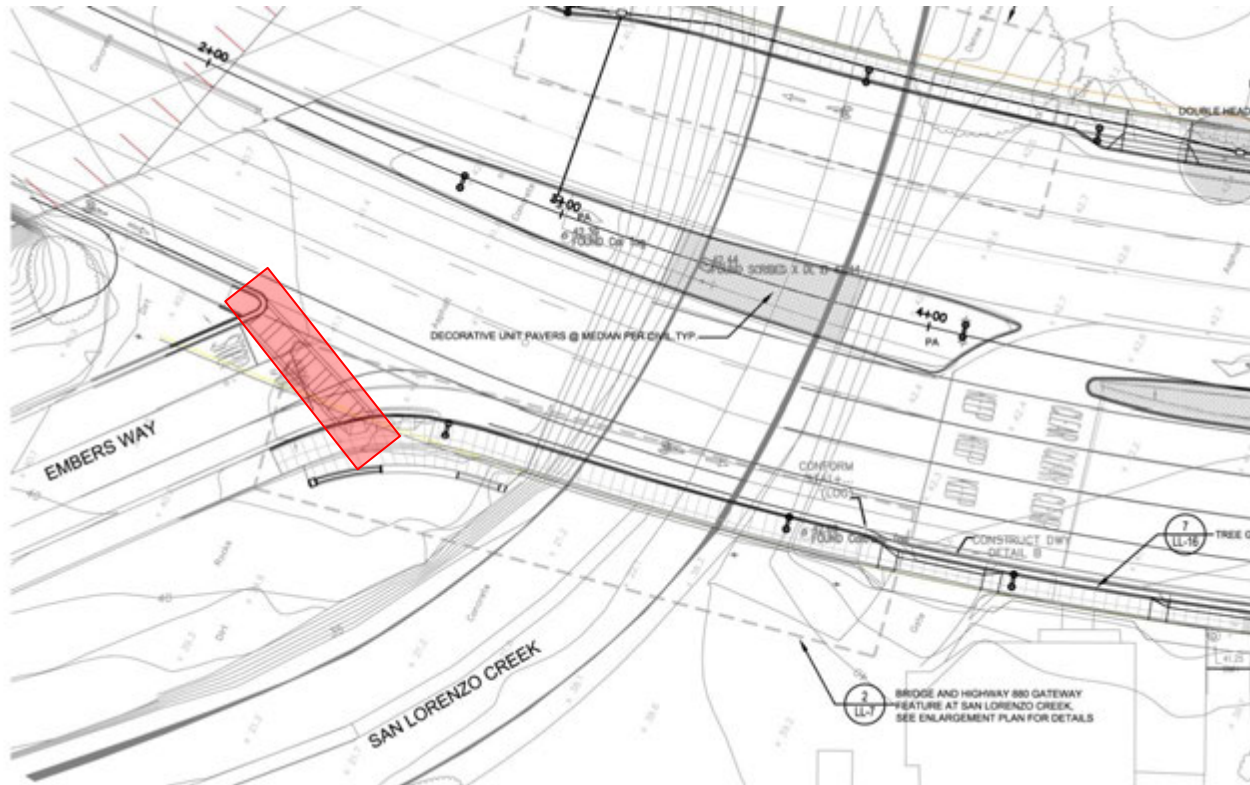
Other Community Comments from October 2014

- Enhance pedestrian crossing at Embers Way freeway off ramp
- Maintain adequate lane space to make a right turn on red at Grant Avenue
- Maintain adequate lane space to make a right turn on red at Paseo Grande
- Ensure there is U-turn access on Hesperian Boulevard
- Provide updates during construction
- Include renovation of freeway entrance to the project scope of work

The screenshot shows the website for Alameda County Public Works Agency (ACPWA.org). At the top, there is a navigation bar with links for Home, Online Requests, Document Library, About Us, Community & Project Updates, Emergency Information, Programs & Services, and Doing Business With Us. Below this is a search bar and a 'Skip to Content' link. The main content area is divided into several sections: 'Online Requests' with a 'Send A Request' button, 'Programs & Services' with a 'Learn More...' button, and a 'News & Press Release' section. The 'News & Press Release' section includes a 'Road Closures' sub-section with a detailed entry for 'Patterson Pass Road Closure' and an 'Upcoming Events' section listing several events from September 12-19, 2015. A red arrow points to the 'RSS Feeds' button in the top right corner of the main content area.

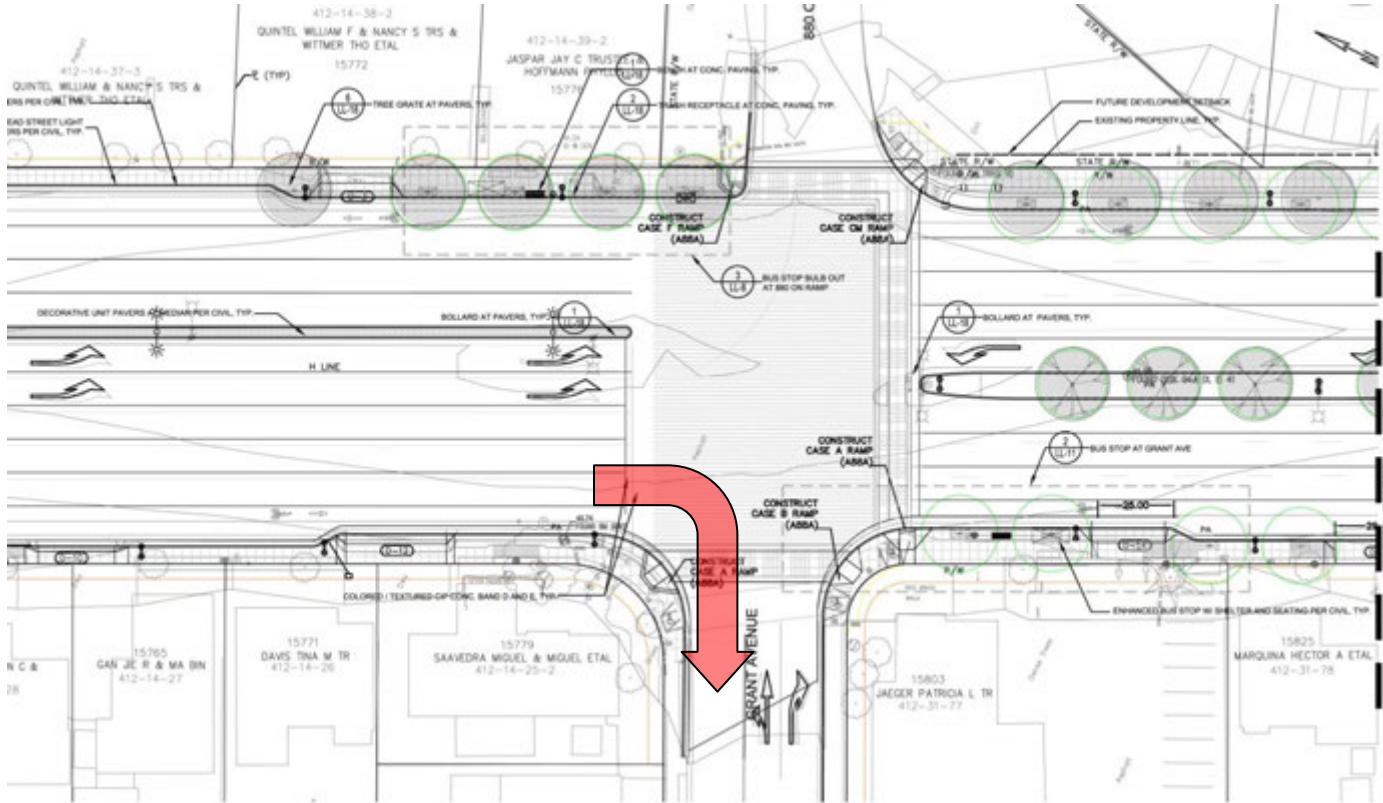
Key Community Comments from October 2014

Enhance pedestrian crossing at Embers Way freeway offramp.



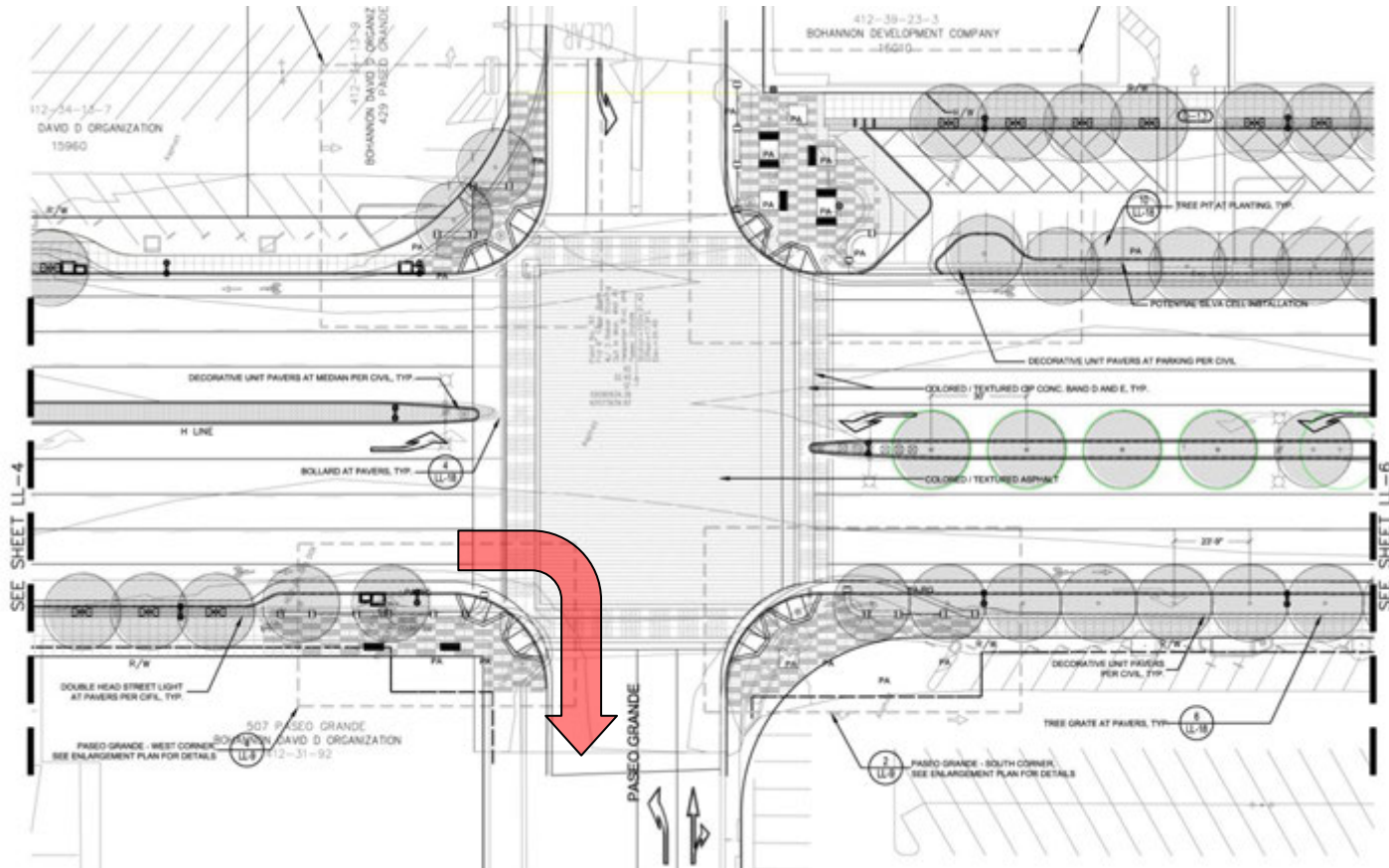
Key Community Comments from October 2014

Maintain adequate lane space to make a right on red to Grant Ave.



Key Community Comments from October 2014

Maintain adequate lane space to make a right on red to Paseo Grande



Questions/Additional Information:

Visit: www.acgov.org/pwa

(Community and Projects Update)
(e-Subscribe)

Call: (510) 670-5827 or (510) 670-5993

Email: info@acpwa.org

THANK YOU

HESPERIAN BLVD STREETScape PROJECT

SAN LORENZO, CA

September 2015

