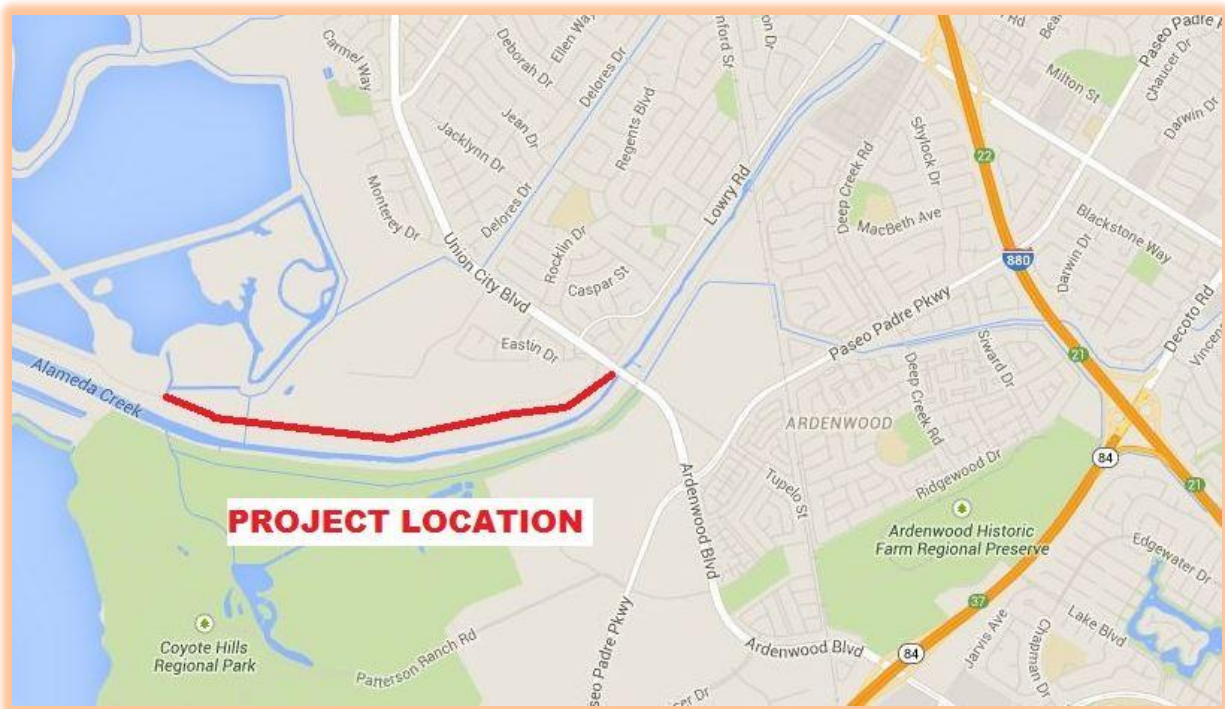


**NOTICE OF INTENT TO ADOPT A MITIGATED NEGATIVE DECLARATION
ALAMEDA COUNTY FLOOD CONTROL AND WATER CONSERVATION DISTRICT**

Alameda Creek North Levee Improvement Project

The Alameda County Flood Control and Water Conservation District (District) proposes to raise 8,650 linear feet of the north levee of Alameda Creek downstream of Union City Boulevard by approximately 4 feet to provide adequate freeboard to meet Federal Emergency Management Agency (FEMA) 100-year (1% annual chance) flood protection requirements. Approximately 40,000 cubic yards (CY) of imported levee material, will be used to raise the levee height within the project limits. The project would remove approximately 210 trees of various sizes that conflict with the project. Following completion of the project, the existing public access trail atop the levee would be restored.



The Mitigated Negative Declaration (MND) and the Initial Study upon which it is based are available for review at the Alameda County Public Works Agency offices 399 Elmhurst Street Hayward, CA 94544 and at the PWA Website: <http://www.acgov.org/pwa>. The document concludes that the project with mitigation measures incorporated would not result in significant adverse impacts. If you disagree, please include your reasons with your written comments. The Alameda County Board of Supervisors will consider the MND and all comments received prior to its adoption or approval of the project. Written comments will be accepted during the public review period from November 1, 2014 to December 1, 2014. Comments should be addressed to:

Mr. Kwablah Attiogbe
Environmental Services Manager
Alameda County Flood Control and Water Conservation District
399 Elmhurst Street
Hayward, CA 94544