

# FLOODWALL IMPROVEMENTS Along Flood Control Earth Channel between the Industrial Parkway Bridge Crossing and Huntwood Avenue ZONE NO. 3A PROJECT

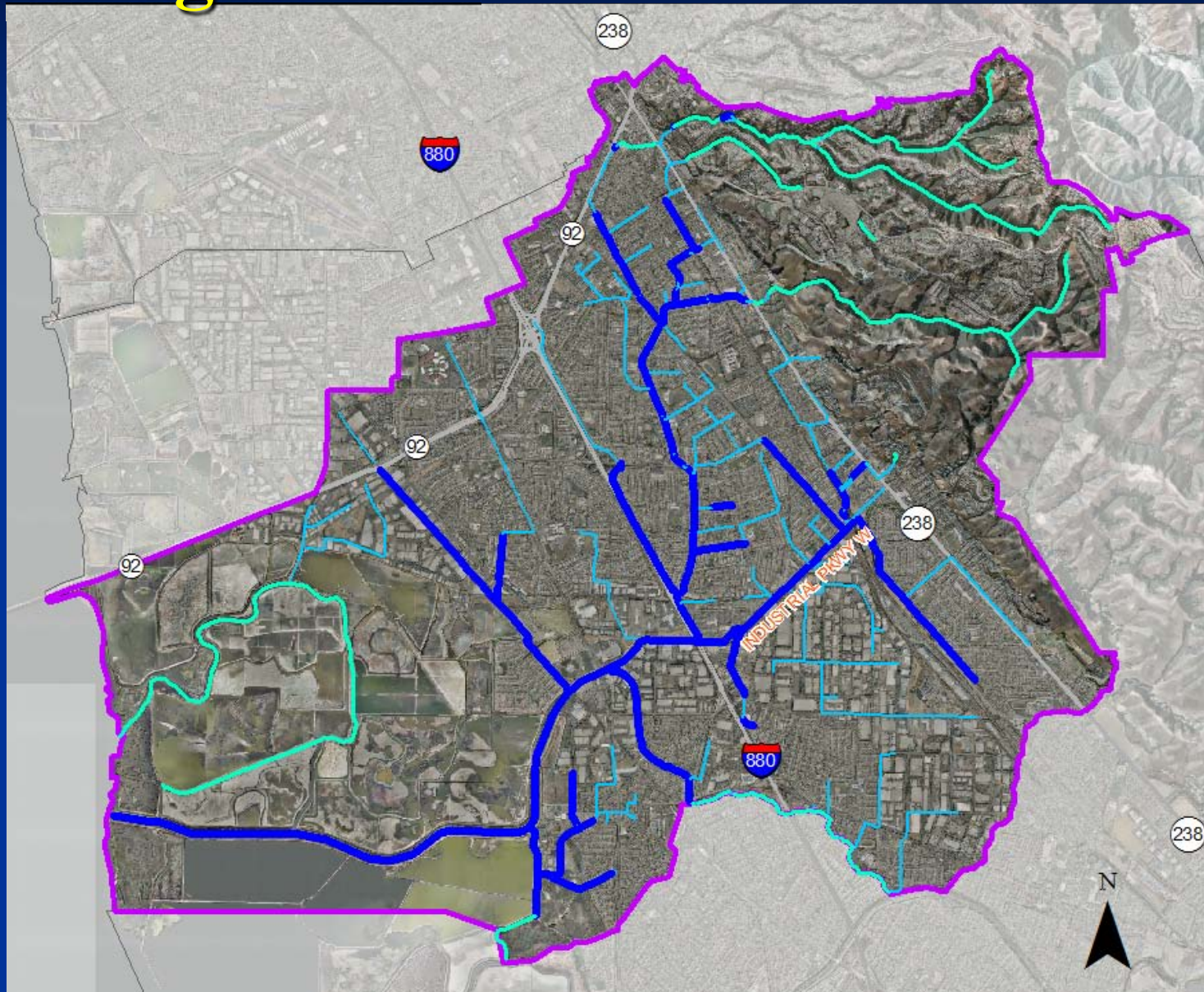


# AGENDA

- What are the flood control improvement needs?
  - Drainage Area
  - FEMA Flood Plains
  - Planned Flood Control Improvements
- Why are the Projects needed?
  - Flood Photos
  - Benefits of the Project
- What will the Project look like?
  - Pre-Construction and Post-Construction Simulations
  - Public Access
  - Revegetation Plans
- When will construction begin?
  - Advertisement and construction schedule
  - Construction Staging Areas and Hours
- How is Project being funded?
- Who to contact during construction?
- Questions?

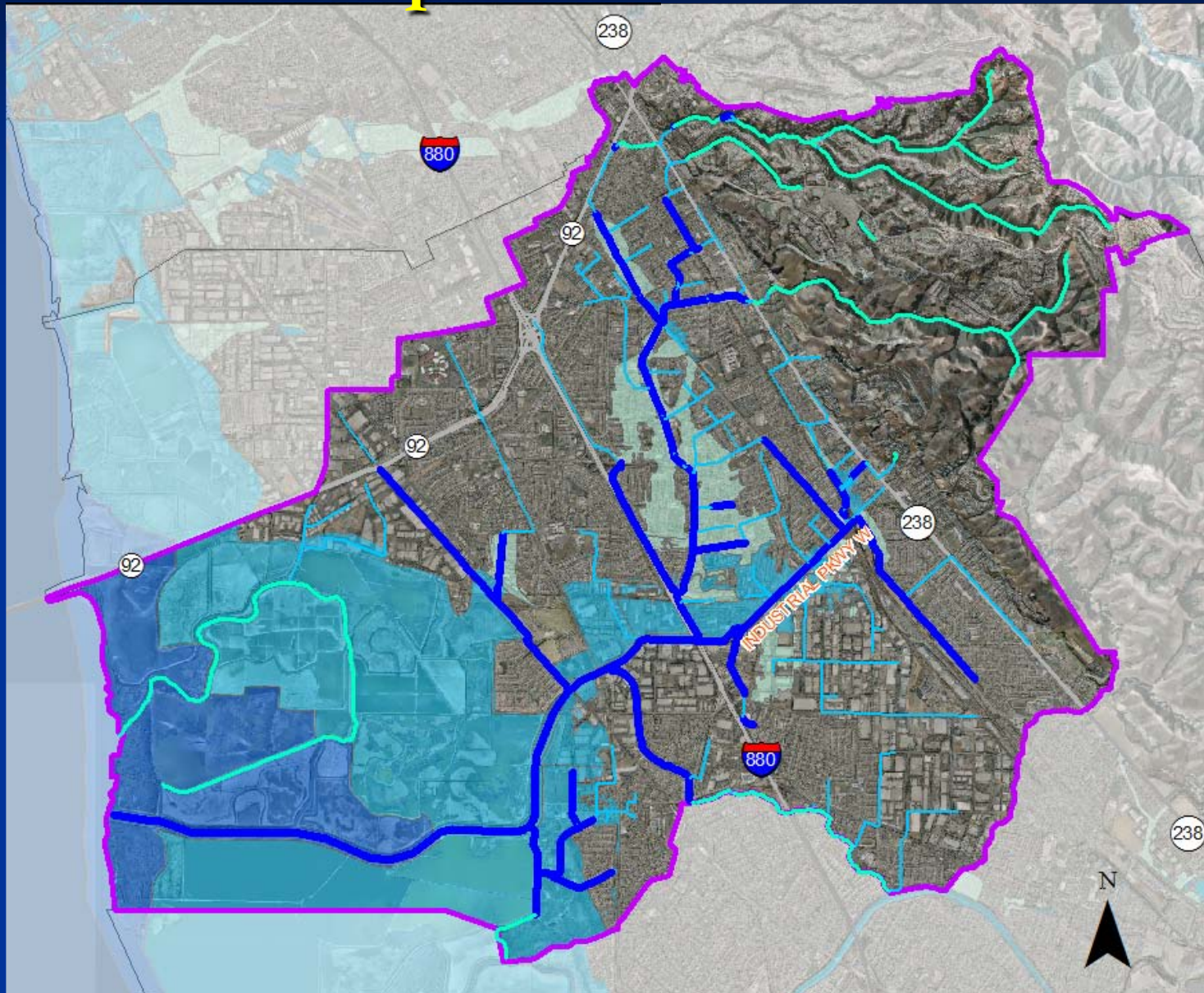


# Drainage Area



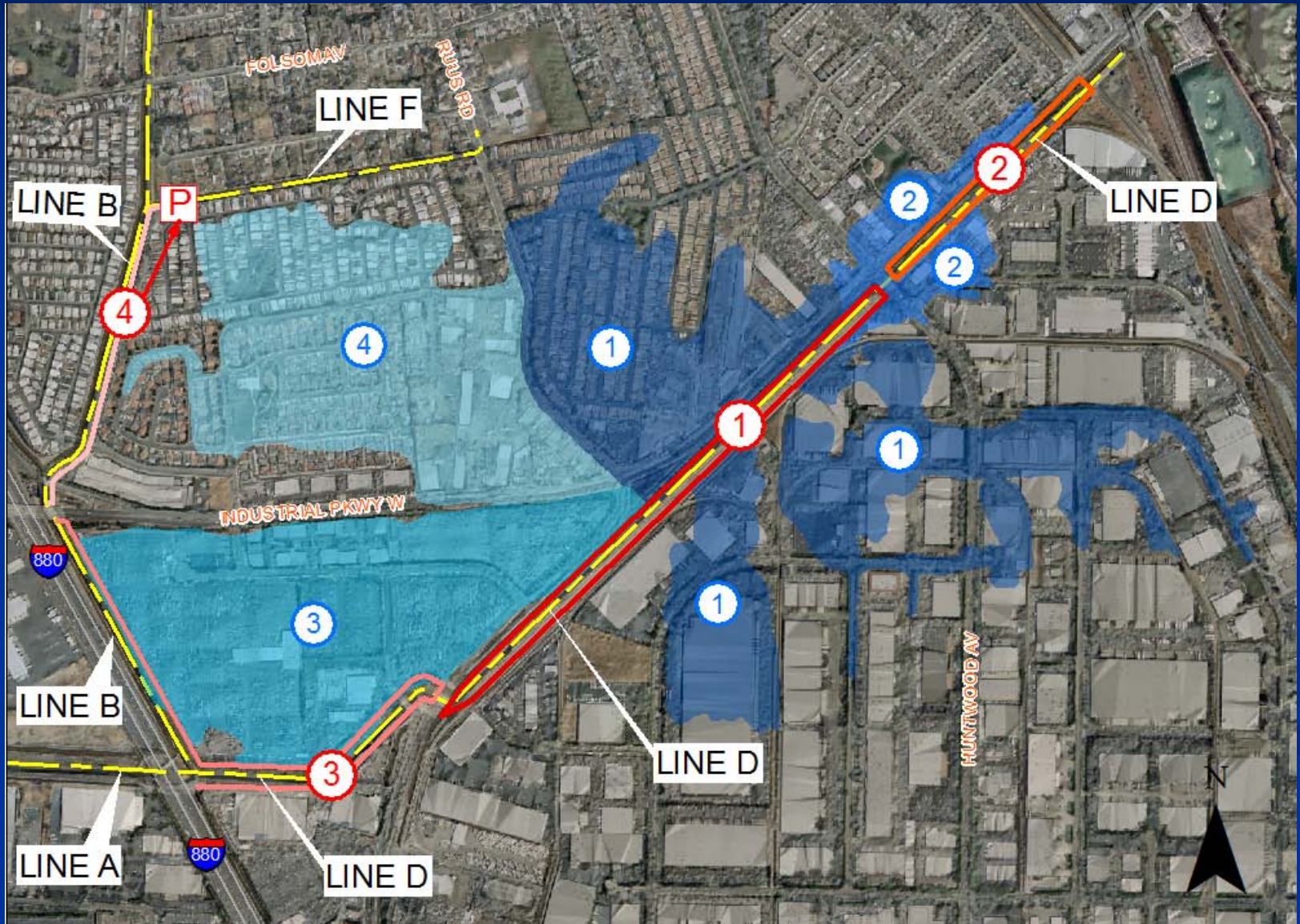


# FEMA Flood plains





# Projects

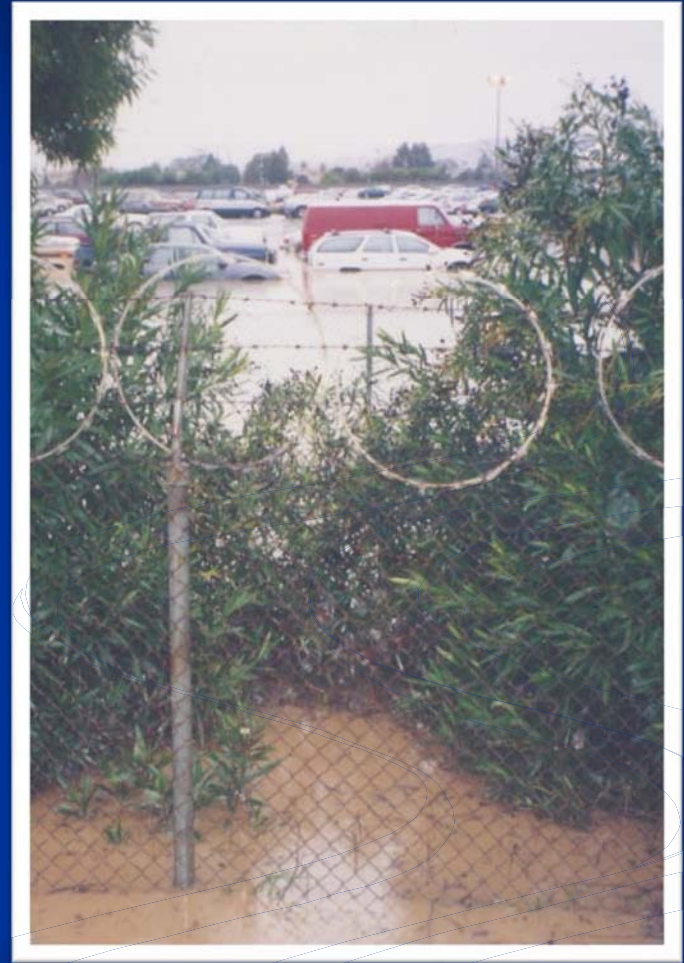


# Why are the projects needed?

- Increase flood protection in the area
- Construct floodwalls to contain high stormwater flows in the earth channels



# Why are the projects needed?



Auto Auction, February 3, 1998

# Why are the projects needed?



Industrial Parkway West  
February 3, 1998





# Why are the projects needed?



Spanish Ranch Mobile  
Home Park  
February 3, 1998

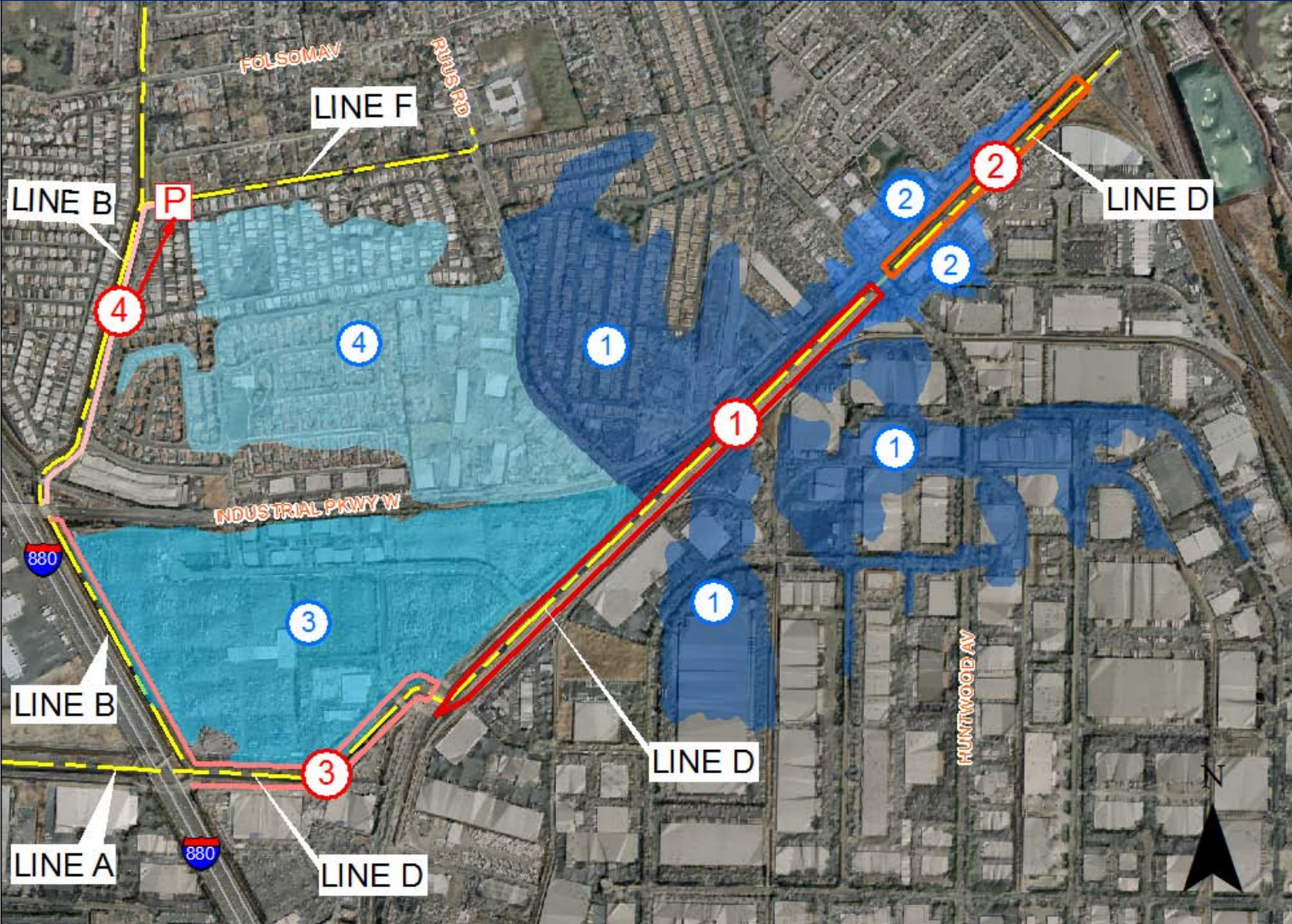


# What are the project benefits?

- Increase flood protection in the area
- Enable the District to apply to FEMA for a Letter of Map Revision (LOMR) to remove 100 year floodplain designations in phases
- Upon FEMA approval of the LOMR, the mandatory flood insurance purchase requirement for affected property owners will be removed
- Potential increase in property values
- Minimize flood damage and inconvenience, as well as health and safety concerns, due to flooding.

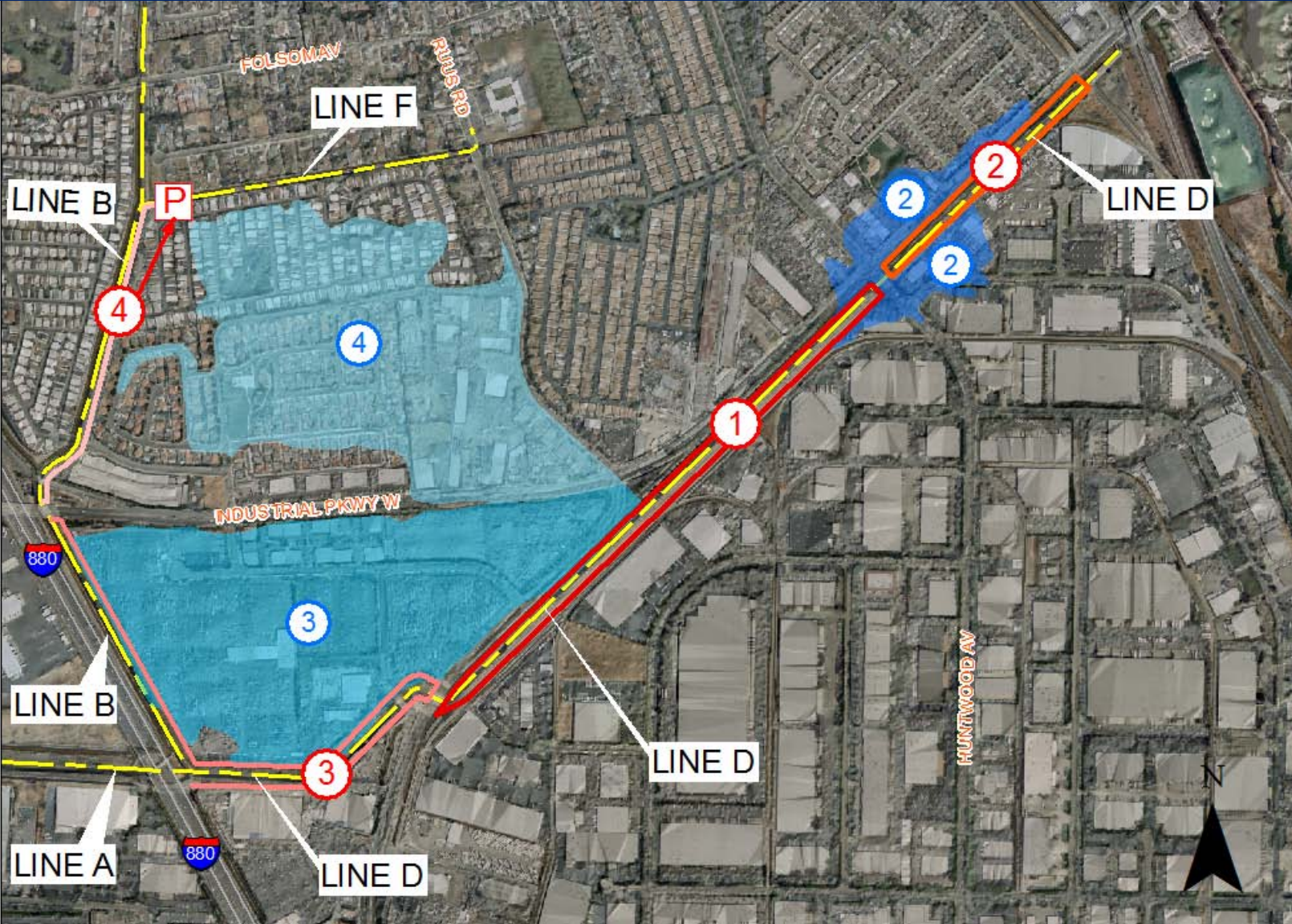


# What are the project benefits?



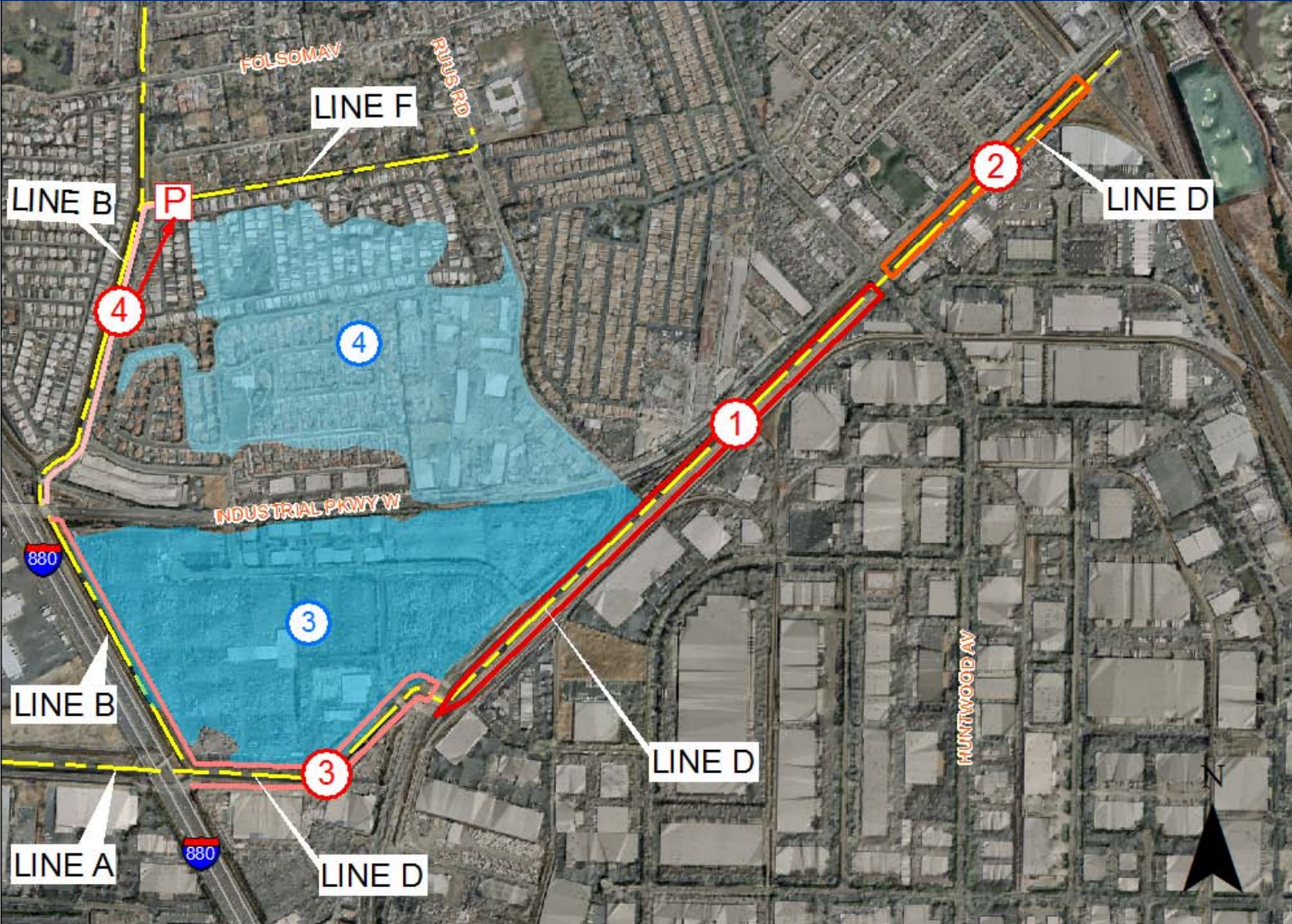


# What are the project benefits?



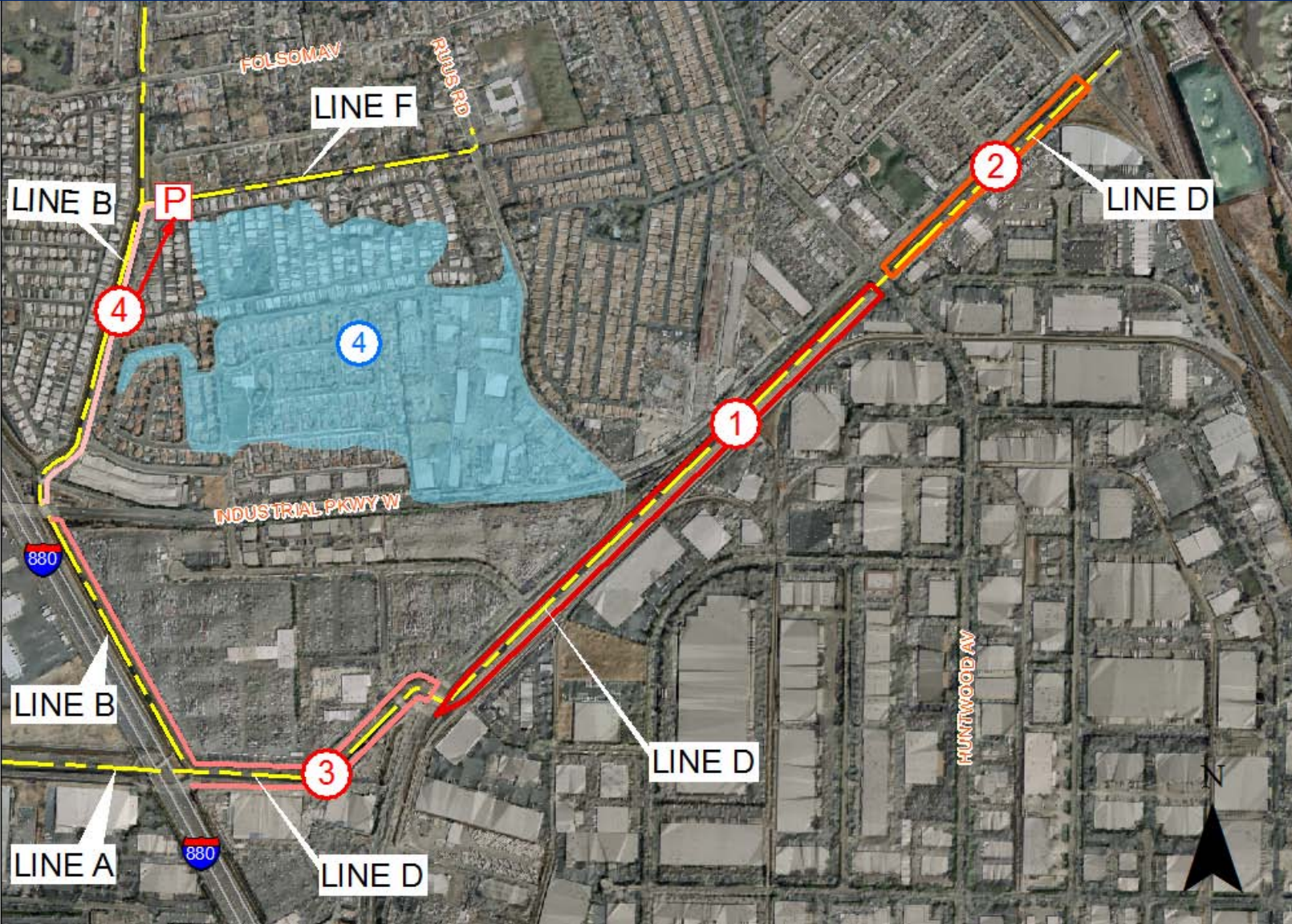


# What are the project benefits?



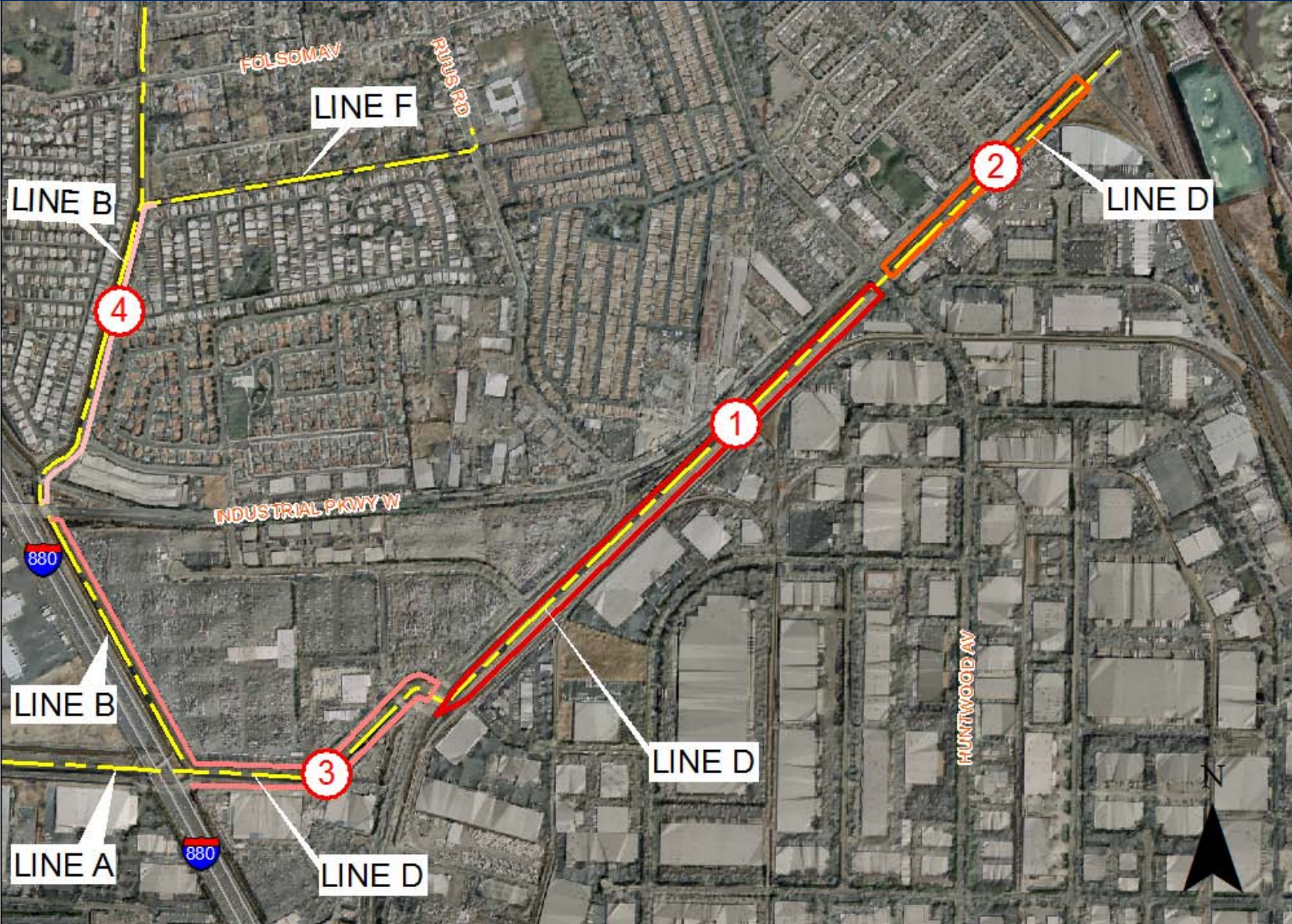


# What are the project benefits?





# What are the project benefits?





# What will the floodwalls look like?



Existing view from Industrial Parkway SW



# What will the floodwalls look like?



Simulated view from Industrial Parkway SW after floodwall improvements

# What will the floodwalls look like?



Simulated view from inside the channel



# What will the floodwalls look like?



Huntwood Headwall  
Existing view from inside the channel

# What will the floodwalls look like?



Huntwood Headwall

Simulated view from inside the channel after floodwall improvements



# How the landscaping be improved?

- 138 Trees will be removed
  - 63 Non-native street trees on Industrial Pkwy
  - 75 Trees on the south side of the channel (various species)
- 236 Native Trees will be planted





# How the landscaping be improved?

## 278 Native Shrubs



Dark Star  
Ceanothus



Christmas Berry



Western Redbud



Flannelbush



# How the landscaping be improved?

885 Native Vines



Boston Ivy

# When will construction begin?

Advertisement for construction bids is planned for July 2010

Construction of the South Bank floodwall could begin in November 2010 and continue through the winter

Construction of the North Bank floodwall should begin in May 2011

Phase I construction should be completed by Summer 2011.



# What are the construction hours?

8:00 a.m. to 5:00 p.m. Weekdays

Temporary lane closures on Industrial  
Parkway will be between  
9:00 a.m. and 3:00 p.m.

# Where will construction staging be?



Industrial Parkway at Ruus  
14' Traffic Lane will remain open

Industrial Pump Station and access road  
on the south channel bank





# How is the project funded?

- Estimated construction cost for Phase I is \$4 M
- 100% funded by the Flood Control Zone No. 3A Revenue  
(generated from a small portion of local property taxes)

# Questions?

