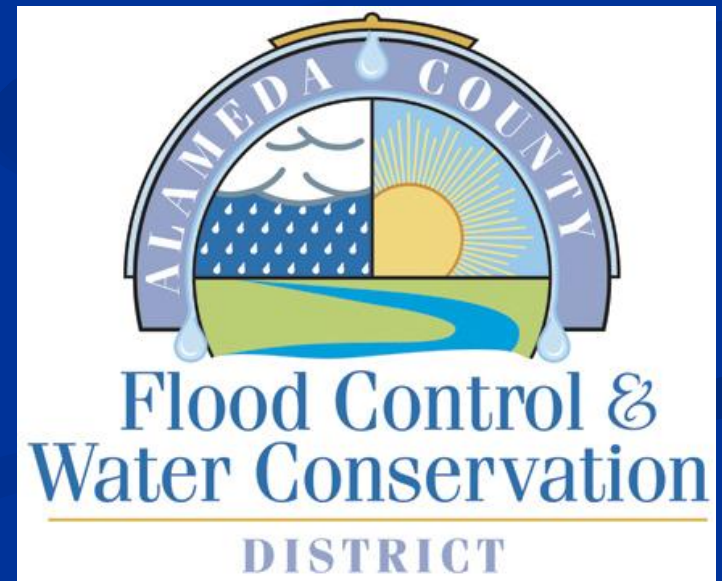
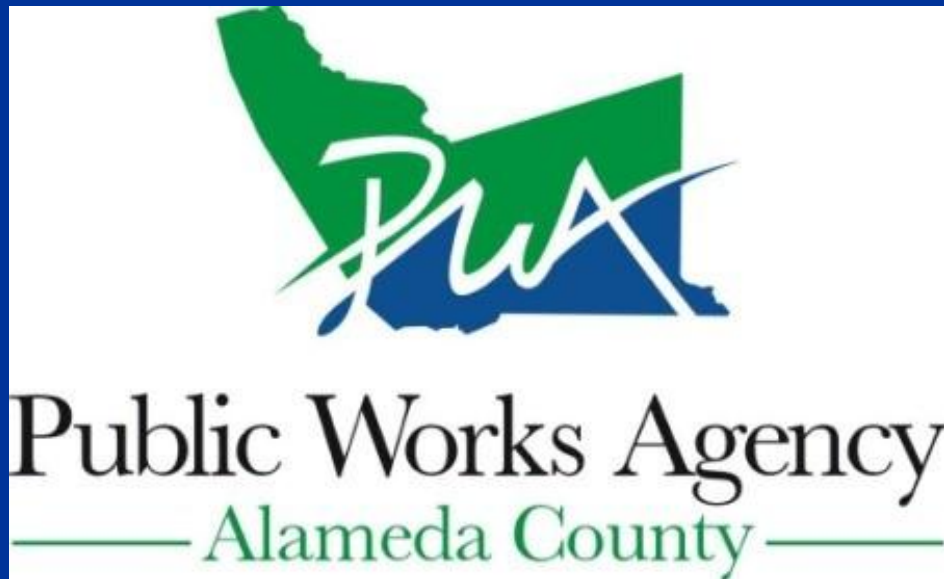


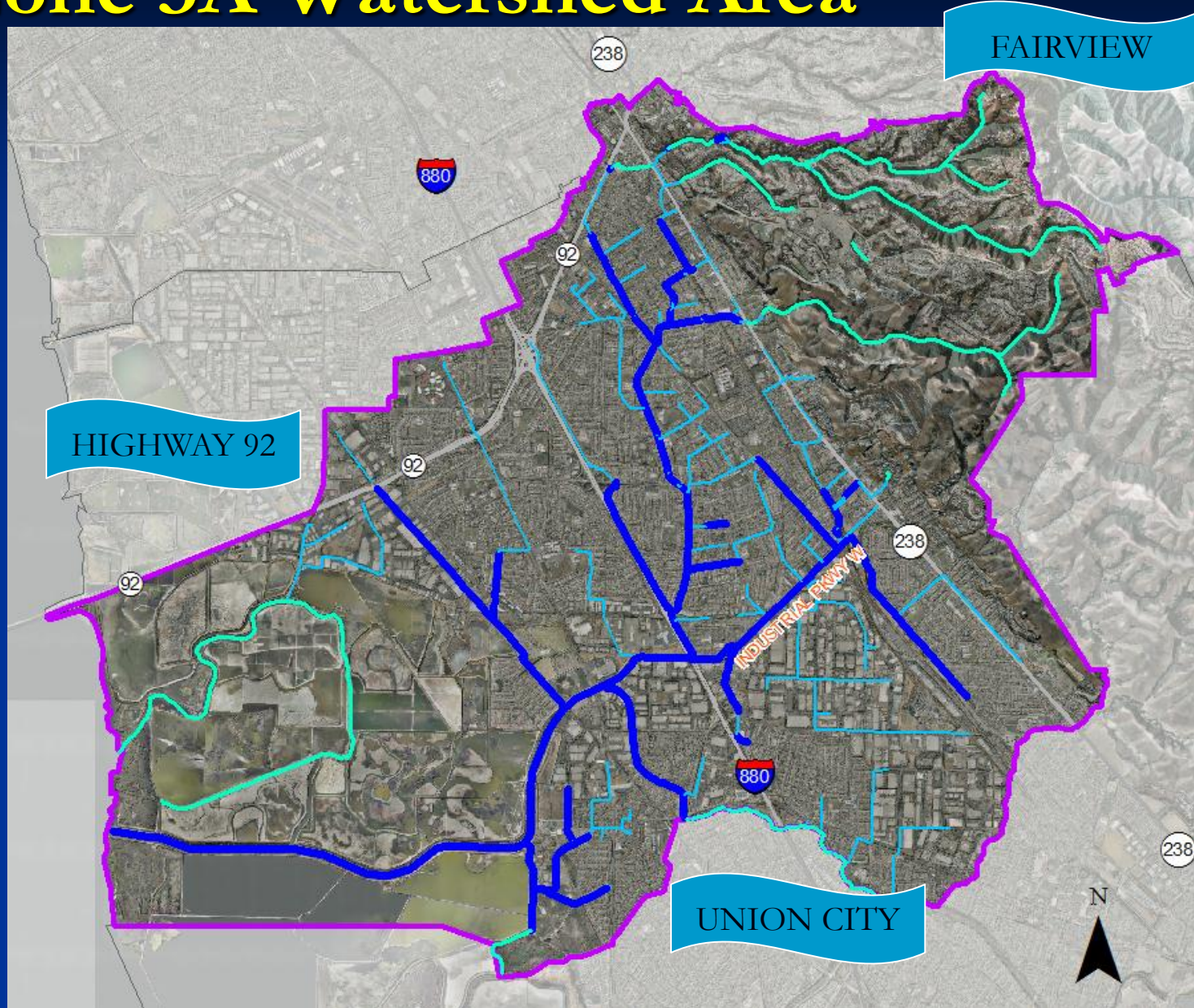
# FLOODWALL IMPROVEMENTS Along Line D (Ward Creek), Phase II, between Huntwood Avenue and BART ZONE NO. 3A PROJECT



# AGENDA

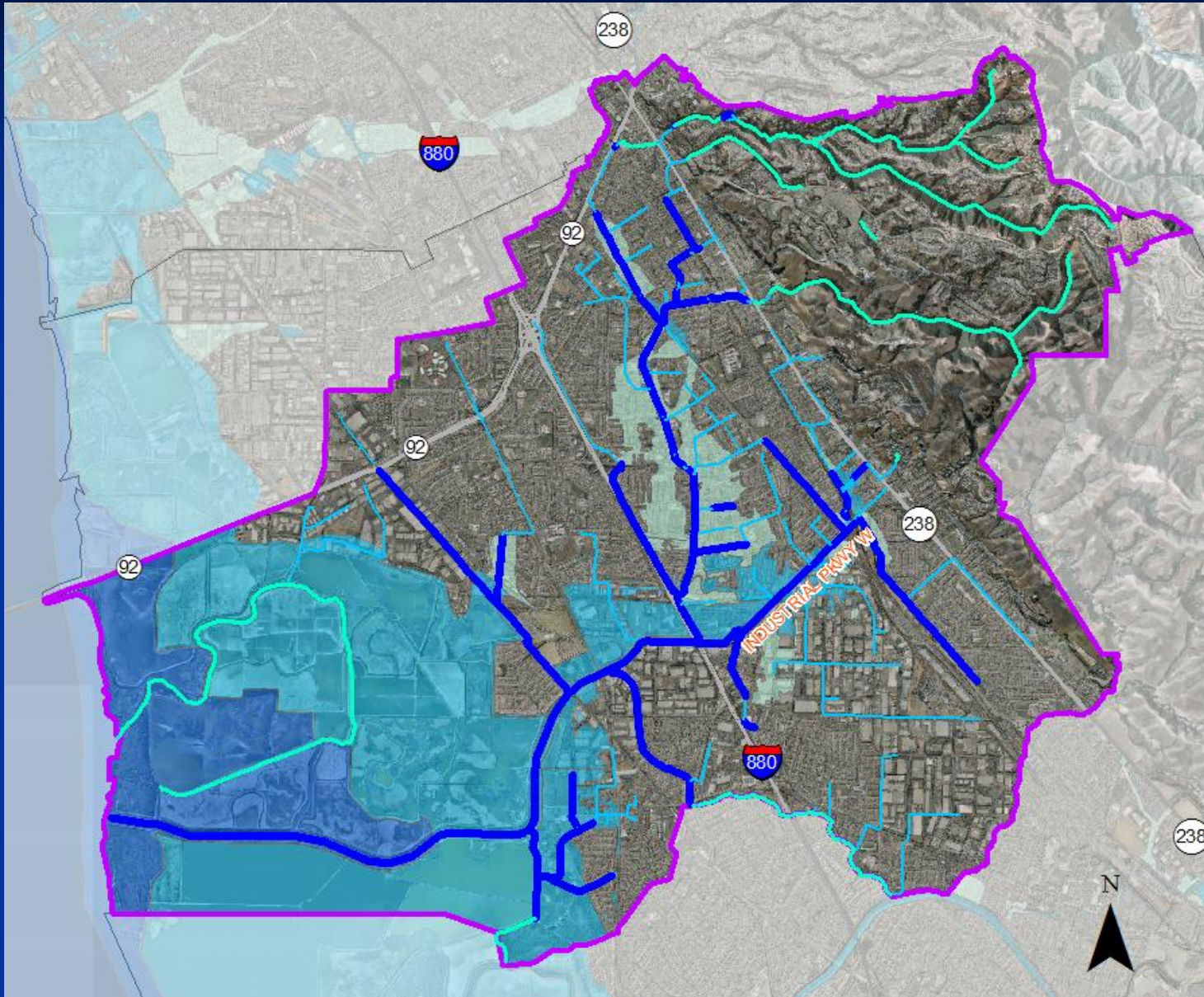
- What are the flood control improvement needs?
- Why are the Projects needed?
- What will the Project look like?
- When will construction begin?
- How is Project being funded?
- Who to contact during construction?
- Questions?

# Zone 3A Watershed Area





# FEMA Flood Hazard Areas





# FEMA Flood Hazard Areas



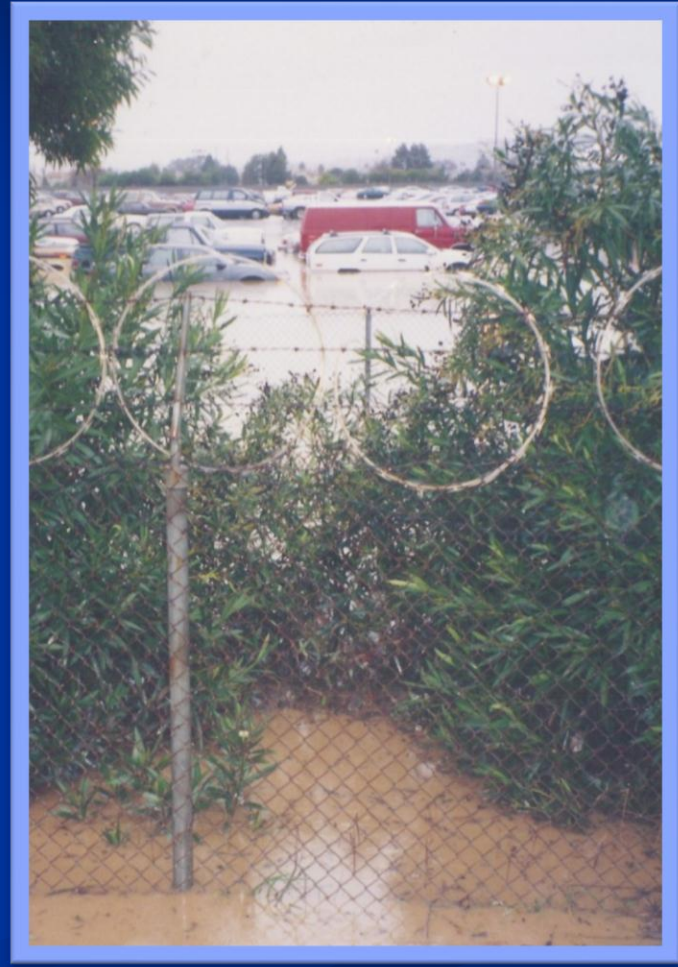
100 YEAR FLOOD HAZARD AREA

# Why are the projects needed?

- Increase flood protection in the area
- To contain high stormwater flows within the earth channels



# Why are the projects needed?



Auto Auction, February 3, 1998

# Why are the projects needed?



Industrial Parkway West  
February 3, 1998





# Why are the projects needed?



Spanish Ranch Mobile  
Home Park  
February 3, 1998

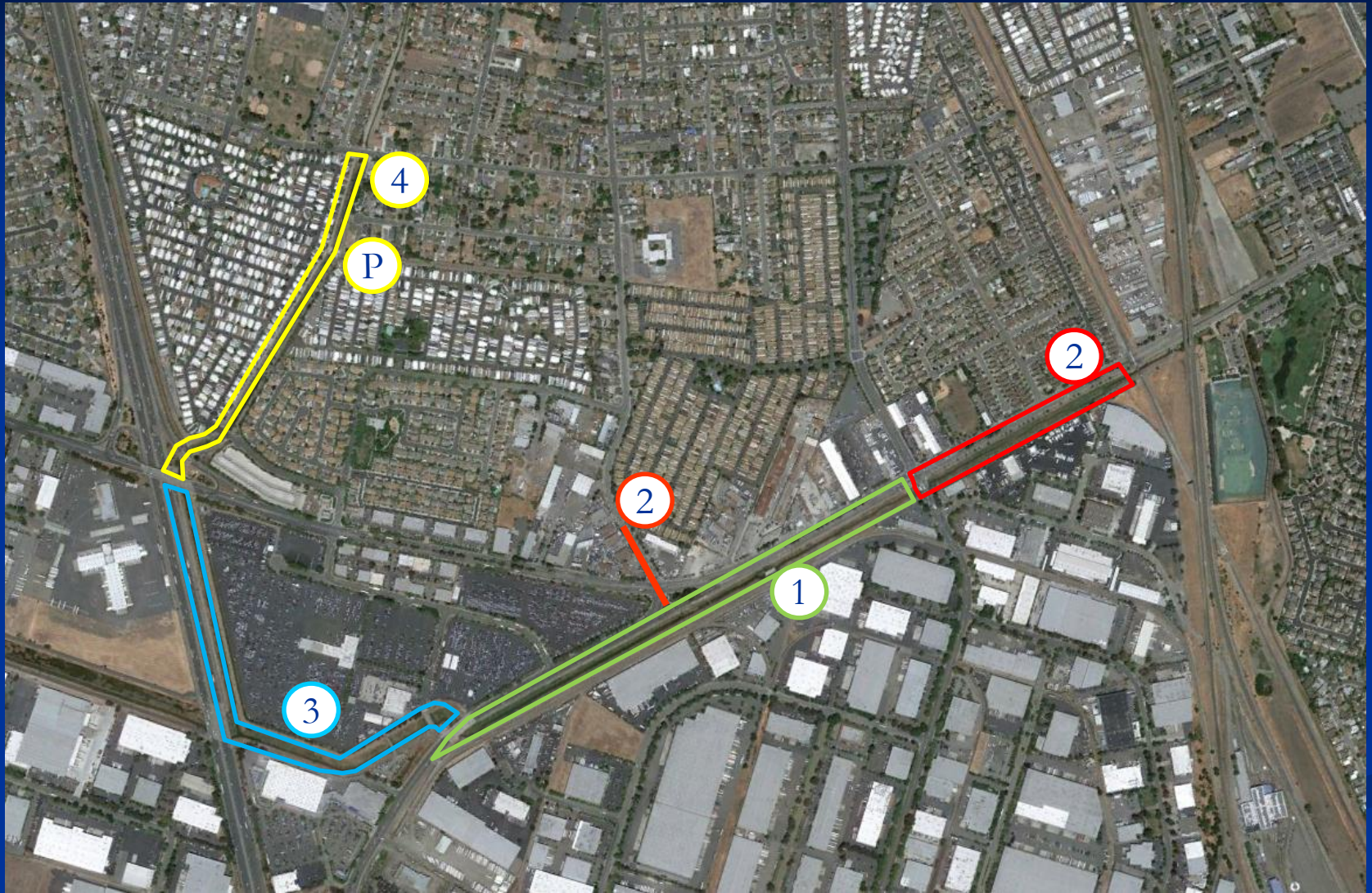


# What are the project benefits?

- Minimize potential flood damage to properties
- Protect important corridors for Emergency Services
- Apply to FEMA for a Letter of Map Revision (LOMR) to remove 100 year floodplain designation



# What are the project phases?





# What are the project phases?

Phase I – Floodwall Improvements between the bridge on Industrial Parkway SW and Huntwood – Completed 2011

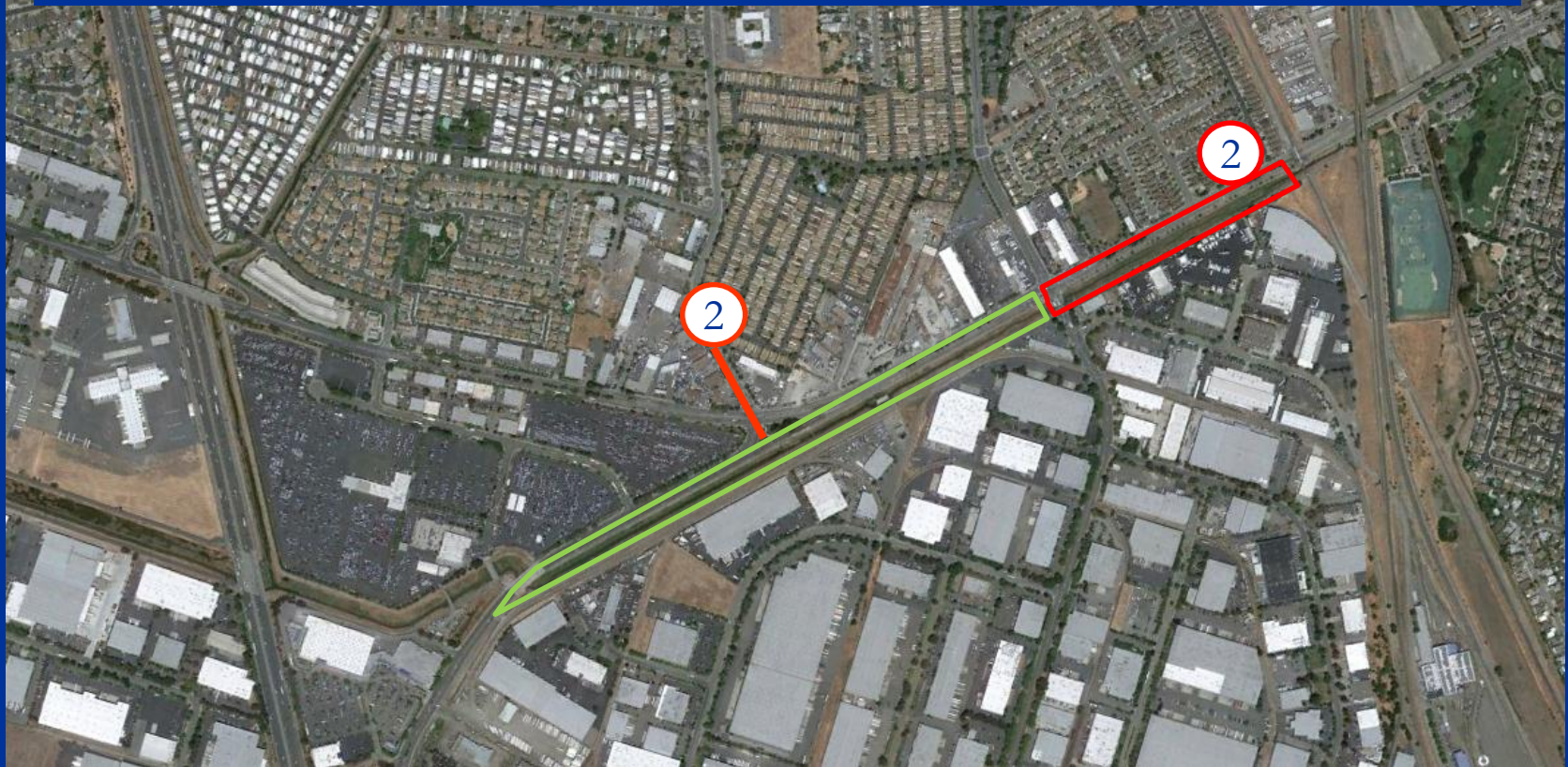




# What are the project phases?

## Phase II (2015)

- Floodwall Improvements between Huntwood and UPRR
- Ruus Road Pump Station Discharge Pipe Improvements

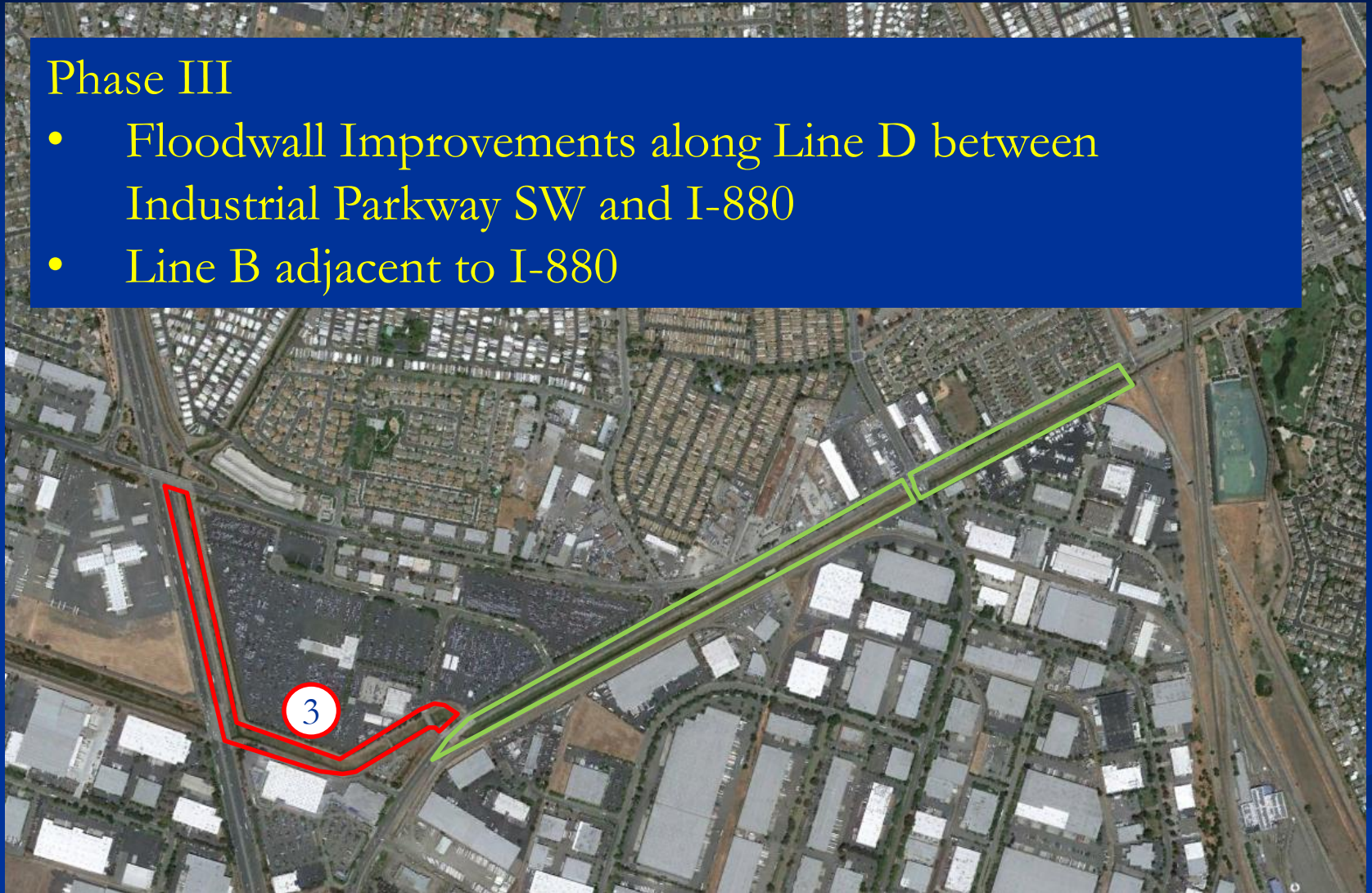




# What are the project phases?

## Phase III

- Floodwall Improvements along Line D between Industrial Parkway SW and I-880
- Line B adjacent to I-880





# What are the project phases?



## Phase IV

- Floodwall Improvements along Line B from I-880 to Folsom
- Pump Station at Line F

# What will the floodwalls look like?



Phase I Channel



# What will the floodwalls look like?



Existing view from Industrial Parkway W

# What will the floodwalls look like?



View from Industrial Parkway W



# What will the floodwalls look like?



Existing view from inside the Phase II area

# What will the floodwalls look like?



Existing view from inside the Phase I area



# What will the floodwalls look like?



Existing Huntwood Headwall  
from inside the channel

# What will the floodwalls look like?



Huntwood Headwall - Phase I



# What will the floodwalls look like?



Street View Huntwood Headwall - Phase II

# What will the floodwalls look like?

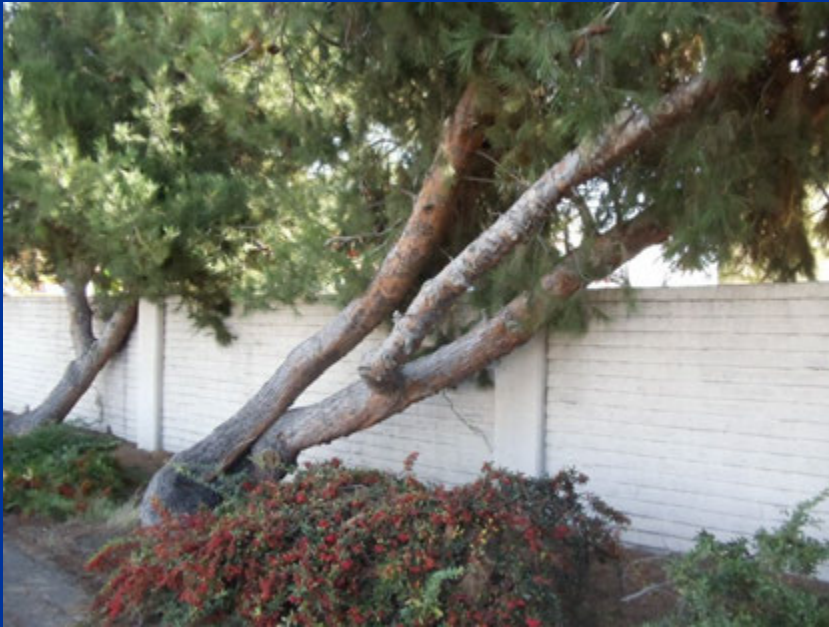


Street View Huntwood Headwall - Phase I



# How the landscaping be improved?

- 95 Trees will be removed (January 2015)
  - 50 Non-native species street trees on Industrial Pkwy W.
  - 45 Trees on the south side of the channel





# How the landscaping be improved?

85 Drought Tolerant Native  
Species Trees



**Big Leaf Maple**



**Flamingo Box Elder**



**Coast Live Oak**

[www.a2zoftrees.com](http://www.a2zoftrees.com)

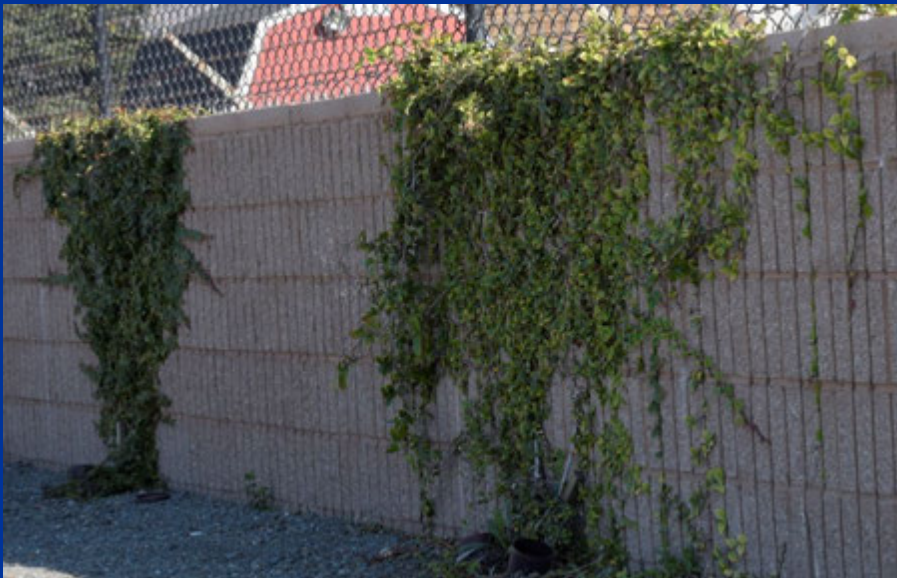


# How the landscaping be improved?

400 Native  
Species Vines



Boston Ivy



Creeping Fig



Carolina Jessamine

# When will construction begin?

January 2015 – Pre-Construction Tree Removal

February 2015 – Advertisement of Project for Construction Bids

May 2015 – Begin construction of Phase II

October 2015 – Anticipated Completion of Phase II



# What are the construction hours?

Construction hours:

8:00 a.m. to 5:00 p.m. Weekdays

Temporary shoulder closures east of  
Huntwood on Industrial Parkway W:

9:00 a.m. and 3:00 p.m.

No work will be allowed on weekends or legal holidays

# How is the project funded?

- Phase II Floodwall construction is estimated at \$1.8 M
- The project is 100% funded by the local Flood Control Zone No. 3A Revenue



# Who can you contact?

- ❖ Prior to the start of construction please contact Ilene Macintire at (510) 670-5177
- ❖ During construction questions about the project should be directed to the PWA Construction Inspection Department at (510) 670-5450

# Questions?

