



- ▲ Parks (4-5 acres or more)
- \* Historic sites/points of interest (see pg. HS•D•POI-1)
- 🌿 East Bay Regional Park
- ① Centers
- BART Stations
- - - Creeks
- ..... City Boundaries
- ..... County Boundary
- 🌊 Water
- - - Trails



## RECREATION CENTERS

### *Albany:*

Albany Community Center ①  
1249 Marin Ave. (510) 524-9283

### *Berkeley:*

Ala-Costa Recreation Center ②  
1300 Rose St. (510) 527-2550  
Berkeley Iceland ③  
2727 Milvia St. (510) 647-1600  
Frances Albrier Community Center ④  
2800 Park St. (510) 644-8515  
James Kenney Recreation Center ⑤  
1720 Eighth St. (510) 981-6650  
Live Oak Recreation Center ⑥  
1301 Shattuck Ave. (510) 644-8513  
Shorebird Nature Center/Adventure Playground ⑦  
160 University Ave. (510) 644-8623

### *Emeryville:*

Robert Savage Recreation Center ⑧  
4300 San Pablo Ave. (510) 596-3782

## SWIM CENTERS

### *Albany:*

Albany Pool ⑨  
1311 Portland Ave. (510) 559-6640

### *Berkeley:*

Berkeley High Pool ⑩  
2300 Milvia St. (510) 644-6843  
King Swim Center ⑪  
1700 Hopkins St. (510) 644-8518  
Strawberry Canyon Recreation Area & Pool ⑫  
Centennial Way  
(510) 643-7470  
West Campus Swim Center ⑬  
2100 Browning St. (510) 644-8520  
Willard Swim Center ⑭  
2701 Telegraph Ave. (510) 644-8519

### *Emeryville:*

Emery Pool ⑮  
1100 47<sup>th</sup> St. (510) 652-1056

## SENIOR CENTERS

### *Albany:*

Senior Citizen Center ⑯  
846 Masonic Ave. (510) 524-9122

### *Berkeley:*

North Berkeley Senior Center ⑰  
1901 Hearst St. (510) 644-6107  
South Berkeley Senior Center ⑱  
2939 Ellis St. (510) 644-6109  
West Berkeley Senior Center ⑲  
1900 Sixth St. (510) 644-6036

### *Emeryville:*

Emeryville Senior Center ⑳  
4321 Salem St. (510) 596-3730

## YOUTH CENTERS

### *Albany:*

Albany Child Care Center ㉑  
1331 Portland Ave. (510) 524-0135  
Albany Teen Center ㉒  
900 Buchanan St. (510) 981-5150

### *Berkeley:*

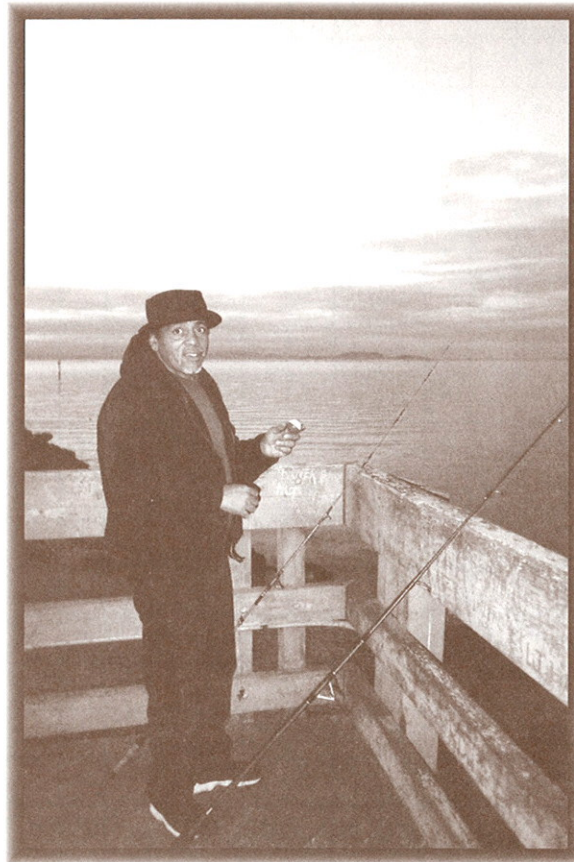
Martin Luther King Jr. Youth Services  
Center ㉓  
1730 Oregon St. (510) 981-5150

### *Emeryville:*

Child Development Center ㉔  
1220 53<sup>rd</sup> St. (510) 596-4343



Albany · Berkeley · Emeryville



*Fishing off the Emeryville Marina Dock*

## GOLF COURSES

### *Berkeley:*

Tilden Golf Course  
Grizzly Peak Blvd. & Shasta Rd.  
(510) 848-7373





**CITY OF ALBANY**  
Recreation & Community Services Dept.  
1249 Marin Avenue  
(510) 524-9283  
www.albanyca.org

**CITY OF BERKELEY**  
Parks, Recreation and Waterfront  
2180 Milvia Street, 3rd Floor  
(510) 670-6700  
www.ci.berkeley.ca.us/parks/

**CITY OF EMERYVILLE**  
1333 Park Avenue  
(510) 596-4300  
www.ci.emeryville.ca.us

C = Community  
N = Neighborhood  
R = Regional  
T = Trail

**SPECIAL AMENITIES**

**SPECIAL FEATURES**

| PARK NAME                            | ADDRESS                                     | ACRES  | PARK TYPE | BALL WALL | BALL FIELD/DIAMOND | BARBEQUE PITS | BASKETBALL | FULL COURT | HALF COURT | BIKING/WALKING PATH | EXERCISE/FITNESS COURSE | PICNIC TABLE | PLAYGROUND | RESERVABLE AREA | RESTROOM | SOCCER/FOOTBALL FIELD | TENNIS COURT | LIGHTED | UNLIT | VOLLEYBALL | HARD COURT | SAND | BAY | BOAT LAUNCH | BOCCIE BALL | COMMUNITY GARDEN | CREEK | DOG PARK | EQUESTRIAN FACILITY | FISHING | FRISBEE GOLF | HORSESHOE COURT | LAKE | SKATE BOARD PARK |  |  |  |   |   |   |  |
|--------------------------------------|---|--------|-----------|-----------|--------------------|---------------|------------|------------|------------|---------------------|-------------------------|--------------|------------|-----------------|----------|-----------------------|--------------|---------|-------|------------|------------|------|-----|-------------|-------------|------------------|-------|----------|---------------------|---------|--------------|-----------------|------|------------------|--|--|--|---|---|---|--|
|                                      |   |        |           |           |                    |               |            |            |            |                     |                         |              |            |                 |          |                       |              |         |       |            |            |      |     |             |             |                  |       |          |                     |         |              |                 |      |                  |  |  |  |   |   |   |  |
| <b>ALBANY</b>                        |   |        |           |           |                    |               |            |            |            |                     |                         |              |            |                 |          |                       |              |         |       |            |            |      |     |             |             |                  |       |          |                     |         |              |                 |      |                  |  |  |  |   |   |   |  |
| Albany Hill/Creekside Park           | Hillside Ave.                               | 10     | N         |           |                    |               |            |            |            | •                   |                         |              |            |                 |          |                       |              |         |       |            |            |      |     |             |             |                  |       |          |                     |         |              |                 |      |                  |  |  |  |   |   |   |  |
| Bay Trail                            | <i>refer to State/Regional Park Section</i> | trail  | T         |           |                    |               |            |            |            | •                   |                         |              |            |                 |          |                       |              |         |       |            |            |      |     | •           |             |                  |       |          |                     |         |              |                 |      |                  |  |  |  |   |   |   |  |
| Eastshore State Park                 | <i>see State/Regional Park Section</i>      |        | R         |           |                    |               |            |            |            |                     |                         |              |            |                 |          |                       |              |         |       |            |            |      |     |             |             |                  |       |          |                     |         |              |                 |      |                  |  |  |  |   |   |   |  |
| Memorial Park                        | 1325 Portland Ave.                          | 6.9    | N         |           | •                  | •             | •          | 2          |            | •                   |                         | •            | •          | •               | •        | •                     | •            | •       |       |            |            |      |     |             |             |                  |       |          |                     |         |              |                 |      |                  |  |  |  |   |   |   |  |
| Ocean View Park                      | 900 Buchanan St.                            | 8      | N         | •         | •                  | •             | •          | 2          | 2          | •                   |                         |              |            |                 |          | •                     | •            | •       |       |            |            |      |     |             |             |                  |       |          |                     |         |              |                 |      |                  |  |  |  |   | • |   |  |
| <b>BERKELEY</b>                      |   |        |           |           |                    |               |            |            |            |                     |                         |              |            |                 |          |                       |              |         |       |            |            |      |     |             |             |                  |       |          |                     |         |              |                 |      |                  |  |  |  |   |   |   |  |
| Aquatic Park                         | Bolivar Way                                 | 100.46 | C         |           |                    | •             |            |            |            | •                   | •                       | •            | •          | •               | •        | •                     |              |         |       |            |            |      |     | •           |             |                  |       |          |                     |         |              |                 |      |                  |  |  |  | • |   |   |  |
| Bay Trail                            | <i>see State/Regional Park Section</i>      | trail  | T         |           |                    |               |            |            |            | •                   |                         |              |            |                 |          |                       |              |         |       |            |            |      | •   |             |             |                  |       |          |                     |         |              |                 |      |                  |  |  |  |   |   |   |  |
| Berkeley Marina                      | 201 University Ave.                         | 56     | C         |           |                    | •             | •          |            | 1          | •                   |                         | •            |            |                 | •        |                       |              |         |       |            |            |      | •   | •           |             |                  |       |          |                     |         |              |                 |      |                  |  |  |  |   |   |   |  |
| Cedar-Rose Park                      | 1300 Rose St.                               | 4.94   | N         |           |                    | •             | •          | 1          |            | •                   |                         | •            | •          | •               |          | •                     | •            |         |       | •          | •          | •    |     |             |             |                  | •     | •        |                     |         |              |                 |      |                  |  |  |  |   |   |   |  |
| Cesar Chavez Park                    | Spinnaker Way                               | 90     | C         |           |                    | •             |            |            |            | •                   |                         | •            |            | •               | •        |                       |              |         |       |            |            |      | •   | •           |             |                  |       | •        |                     |         |              |                 |      |                  |  |  |  |   |   |   |  |
| Codornices Park/Berkeley Rose Garden | 1201 Euclid Ave.                            | 10.6   | N         |           | •                  | •             | •          | 1          |            | •                   |                         | •            | •          | •               | •        |                       | •            |         |       |            |            |      |     |             |             |                  | •     |          |                     |         |              |                 |      |                  |  |  |  |   |   |   |  |
| Eastshore State Park                 | <i>see State/Regional Park Section</i>      |        | R         |           |                    |               |            |            |            |                     |                         |              |            |                 |          |                       |              |         |       |            |            |      |     |             |             |                  |       |          |                     |         |              |                 |      |                  |  |  |  |   |   |   |  |
| Glendale-La Loma Park                | 1339 La Loma                                | 5.61   | N         |           | •                  | •             | •          |            | 1          | •                   |                         | •            | •          | •               | •        |                       |              |         |       |            |            |      |     |             |             |                  |       |          |                     |         |              |                 |      |                  |  |  |  |   |   |   |  |
| Harrison Park                        | Harrison & Fifth St.                        | 5.6    | N         |           |                    |               |            |            |            | •                   |                         | •            |            | •               | •        |                       |              |         |       |            |            |      |     |             |             |                  | •     |          |                     |         |              |                 |      |                  |  |  |  |   |   | • |  |
| James Kenney Park                    | Eighth St.                                  | 4.24   | N         |           | •                  | •             | •          | 2          | 1          | •                   |                         | •            | •          | •               | •        | •                     | •            | •       |       |            | •          | •    |     |             |             |                  |       |          |                     |         |              |                 |      |                  |  |  |  |   |   |   |  |
| John Hinkel Park                     | Southampton Ave.                            | 4.19   | N         |           |                    | •             |            |            |            |                     |                         | •            | •          | •               | •        |                       |              |         |       |            |            |      |     |             |             |                  | •     |          |                     |         |              |                 |      |                  |  |  |  |   |   |   |  |
| Live Oak Park                        | 4301 Shattuck Ave.                          | 5.52   | N         |           | •                  | •             | •          | 2          |            | •                   |                         | •            | •          | •               | •        |                       | •            | •       |       |            | •          | •    |     |             |             |                  | •     |          |                     |         |              |                 |      |                  |  |  |  |   |   |   |  |
| Ohlone Greenway                      | <i>refer to map on facing page</i>          | trail  | T         |           |                    |               |            |            |            | •                   |                         |              |            |                 |          |                       |              |         |       |            |            |      |     |             |             |                  |       |          |                     |         |              |                 |      |                  |  |  |  |   |   |   |  |
| Ohlone Park                          | Hearst Ave. & Grant St.                     | 9.8    | N         |           | •                  | •             | •          | 1          |            | •                   | •                       | •            | •          | •               |          | •                     |              |         |       |            | •          | •    |     |             |             | •                | •     | •        |                     |         |              |                 |      |                  |  |  |  |   |   |   |  |
| Remillard Park                       | Keeler Ave.                                 | 5.9    | N         |           |                    |               |            |            |            | •                   |                         | •            | •          |                 |          |                       |              |         |       |            |            |      |     |             |             |                  | •     |          |                     |         |              |                 |      |                  |  |  |  |   |   |   |  |
| San Pablo Park                       | 2800 Park St.                               | 12.95  | C         |           | •                  | •             | •          | 3          |            | •                   |                         | •            | •          | •               | •        | •                     | •            | •       |       |            |            |      |     |             |             |                  | •     |          |                     |         |              |                 |      |                  |  |  |  |   |   |   |  |
| Shorebird Park & Nature Center       | 160 University Ave.                         | 7.17   | N         |           |                    | •             |            |            |            | •                   |                         | •            | •          |                 | •        |                       |              |         |       |            | •          |      |     | •           |             |                  |       |          |                     |         |              |                 |      |                  |  |  |  |   |   |   |  |
| Strawberry Creek Park                | Bancroft Way & West St.                     | 4      | N         |           | •                  |               | •          | 2          | 1          | •                   |                         | •            | •          | •               |          | •                     | •            | •       |       |            | •          | •    |     |             |             |                  | •     |          |                     |         |              |                 |      |                  |  |  |  |   |   |   |  |
| Tilden Regional Park & Lake Anza     | <i>see State/Regional Park Section</i>      |        | R         |           |                    |               |            |            |            |                     |                         |              |            |                 |          |                       |              |         |       |            |            |      |     |             |             |                  |       |          |                     |         |              |                 |      |                  |  |  |  |   |   |   |  |
| <b>EMERYVILLE</b>                    |   |        |           |           |                    |               |            |            |            |                     |                         |              |            |                 |          |                       |              |         |       |            |            |      |     |             |             |                  |       |          |                     |         |              |                 |      |                  |  |  |  |   |   |   |  |
| Bay Trail                            | <i>see State/Regional Park Section</i>      | trail  | T         |           |                    |               |            |            |            | •                   |                         |              |            |                 |          |                       |              |         |       |            |            |      |     | •           |             |                  |       |          |                     |         |              |                 |      |                  |  |  |  |   |   |   |  |
| Eastshore State Park                 | <i>see State/Regional Park Section</i>      |        | R         |           |                    |               |            |            |            |                     |                         |              |            |                 |          |                       |              |         |       |            |            |      |     |             |             |                  |       |          |                     |         |              |                 |      |                  |  |  |  |   |   |   |  |
| Emeryville Marina Park               | 3310 Powell St.                             | 11.6   | C         |           |                    | •             |            |            |            | •                   |                         | •            |            |                 | •        |                       |              |         |       |            |            |      |     | •           | •           |                  |       |          |                     |         |              |                 |      |                  |  |  |  |   |   |   |  |