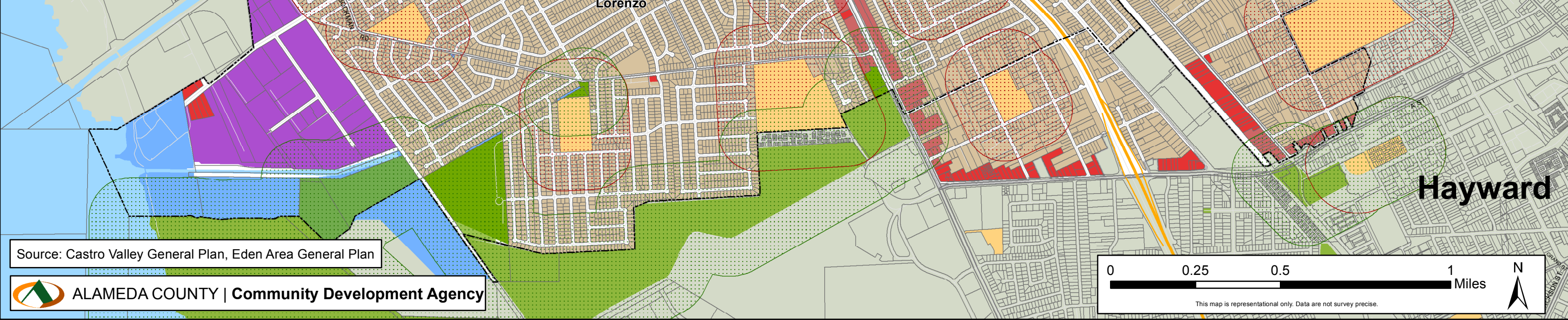
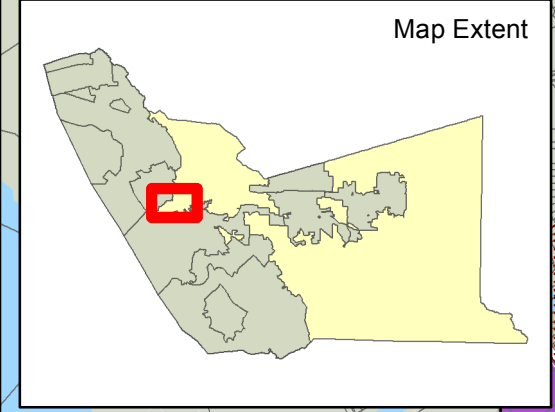


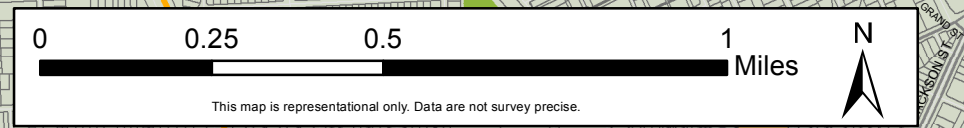
Urban Unincorporated County Zoning Designations and Sensitive Receptors 600 ft. Buffer

Map A

- Legend**
- Existing Medical Marijuana Locations
 - Freeways
 - Schools 600' Buffer
 - Parks 600' Buffer
 - Schools
 - Parks
 - Commercial Parcels Not Within 600' Buffer
 - Commercial
 - Residential
 - Light Industrial and Research & Development/Office
 - Public Facilities
 - Open Space-Natural
 - Open Space-Parks
 - Agriculture
 - Planning Areas
 - Cities



Source: Castro Valley General Plan, Eden Area General Plan



This map is representational only. Data are not survey precise.