

ALAMEDA COUNTY

ALAMEDA COUNTY DEPARTMENT OF AGRICULTURE/WEIGHTS AND MEASURES

Farm, Fresh, Fun!

2010

CROP REPORT



Department
of
Agriculture/Weights and Measures

SPECIAL EFFECT & CREATIVITY
INVITATIONAL EXHIBIT



Alameda County Fair

For many years, the Alameda County Department of Agriculture/Weights and Measures has participated in the Alameda County Fair, building displays that highlight the department's programs and their benefit to the citizens of this county and state. The 2011 fair theme of 'Farm, Fresh, Fun' features a handcrafted farm stand to showcase some of Alameda County's local producers of farm, fresh products.

The display also is intended to educate Alameda County residents about the important work the Department does every day, and while not every program the Department is involved in could be featured, some of them are highlighted by using the 'Question and Answer' interactive board, digital display screens, folding display board and with staff participation during Kid's Days featuring games and educational prizes.

The Department's talented and creative staff built most of the items in the display. The painted mural, farm stand, fencing and display boxes were all handcrafted by the team to bring texture, color and richness to the display and create a sense of enjoyment from simple things, such as riding a bike to visit a farm stand or farmer's market, buying items for a picnic, cooking from the farmer's market and just enjoying a day in the country with products grown in Alameda County.

Each year the agricultural fair displays are judged in several categories. This display received 3 first place awards, 2 second place awards, the 'Overall Judge's Favorite Ag Feature Booth' award and the Bill Ralph Award, which is the result of other fair exhibitors voting for their favorite exhibit.

Many thanks go out to all the people and organizations that helped make this agricultural fair booth display one of the best ever.



Chris Bazar
Agency Director

ALAMEDA COUNTY COMMUNITY DEVELOPMENT AGENCY
DEPARTMENT OF AGRICULTURE

DENNIS F. BRAY - COMMISSIONER

SCOTT T. PAULSEN - ASSISTANT COMMISSIONER

224 W. WINTON AVENUE, ROOM 184, HAYWARD, CA 94544
phone 510.670.5232 fax 510.783.3928 www.acgov.org/cda/awm

Karen Ross, Secretary
California Department of Food and Agriculture
and
The Honorable Board of Supervisors
County of Alameda, California

July 5, 2011

It is my pleasure to present the 2010 Alameda County Crop Report. In accordance with Sections 2272 and 2279 of the California Food and Agricultural Code this publication is presented annually and reports statistical information on acreage, yield, and gross value of Alameda County agricultural products.

The 2010 total gross value of Alameda County's agriculture was \$35,296,000. This figure is a decrease of \$1,871,000 (5.0%) from the 2009 gross production value of \$37,167,000.

Fruit and Nut Crops, remained number one in gross production value at \$11,994,000, however this was a decrease of 15.2% from last year due primarily to lower market values of wine grapes. Wine Grapes are the single largest agricultural commodity in the county valued at \$11,419,000. Nursery products valued at \$11,476,000, which include ornamental trees and shrubs, bedding plants, and indoor decorative plants, was down by 16.1% compared to 2009 due to reduced market values. The third highest valued commodity, Livestock and Poultry, at \$6,447,000, was up significantly by 35% from the previous year due to an increase in the unit price and in herd size.

I would like to emphasize that the numbers in this report are gross values only and do not reflect costs related to production, harvesting, marketing or transportation. The overall local economic benefit of our agricultural production is generally thought to be about three times the gross production value.

I sincerely appreciate the cooperation of the many individuals and organizations who provided the necessary information for this report. I would like to thank all the members of our staff whose hard work and dedication made this report possible, with a special thank you to Janie Chambers, who will retire this year, for her creativity and support of this publication over the past ten years.

Respectfully submitted,

A handwritten signature in black ink, appearing to read "Dennis F. Bray".

Dennis F. Bray
Agricultural Commissioner

Annual Crop Report for Year 2010

ALAMEDA COUNTY

Alameda County Board of Supervisors

SCOTT HAGGERTY DISTRICT 1
NADIA LOCKYER..... DISTRICT 2
WILMA CHAN..... DISTRICT 3
NATE MILEY DISTRICT 4
KEITH CARSON..... DISTRICT 5

County Administrative Officer

SUSAN MURANISHI

Director, Community Development Agency

CHRIS BAZAR

Deputy Director

Agricultural Commissioner

Sealer of Weights and Measures

DENNIS F. BRAY

Table of Contents

Alameda County Fair.....	Inside Front Cover
Letter to the Secretary/Board of Supervisors	1
Table of Contents.....	2
Staff List.....	3
Field Crops	4
Fruit and Nut Crops	4
Vegetable Crops	5
Livestock and Poultry	5
Nursery Products.....	5
Sustainable Agriculture Report.....	6
Biological Control.....	6
Pest Management and Eradication	6
Pest Exclusion	7
Light Brown Apple Moth.....	7
Alameda County Agriculture Canine Detection Team.....	7
Pest Detection	8
Organic Farming.....	9
Urban Gardening.....	9
Alameda County School Gardens Map	9
Five Year Comparison Summary	10
Equine Statistics.....	10
General Alameda County Information	11
Alameda County Mission Statement	12
Farewell to Janie Chambers.....	Inside Back Cover

**Alameda County
Department of Agriculture /Weights & Measure
STAFF**

**CDA - Deputy Director
Agricultural Commissioner/Sealer of Weights and Measures
Dennis F. Bray**

**CDA - Assistant Deputy Director
Assistant Agricultural Commissioner/Sealer of Weights and Measures
Scott T. Paulsen**

**Deputy Agricultural Commissioner
Ronnie K. Eaton**

**Deputy Agricultural Commissioner
Cathy Roache**

**Deputy Agricultural Commissioner
Robert Blumenthal**

**Deputy Sealer of Weights and Measures
Ronald Hasemeyer**

**Agricultural and Standards Manager
Cheryl Mailho**

Agricultural Biologists

Lisa Centoni
Edwin De Villa
Edmund Duarte
Patricia Hunt

Blane Manchester
Kenneth Peek
Alcides Reyes
Justin Riggs
Raghubinder Sahota

Arisa Soontraviratana
Ashenafi Tadesse
Samantha Tomlinson
Michelle Trudeau

Weights and Measures Inspectors

William Alejandro
Brent Faria

Eric Forsberg
Ivan Gallo
Estella Harris

Frank Jensen
Rodolfo Raras

Pest Detection Specialists

Mohamed Elhashash
Carmen Franke
Jonathan Gomes
Joanne Greer
Anand Shankar

Insect Trappers/Seasonal

Robert Brostrom
Walter Bruj
Gavin Edward
Amare Haileselassie

Darin Hoagland
Patrick Hoffman
Mohamed Khair
John Kransky

Khang Lam
Seth Mariconi
Jackie McCort

Bridget Mooney
Rhonda Nave
Reed O'Donnell
Claire Perkins

Victor Rabinovich
Nikolas Radey
Virendra Singh
Dereje Tamerat

**Supervising Secretary II
Cora Robles**

Administrative/Clerical Support

Ricca Alcantara

Suzette Morgado

Deon Sailes

Clarice Walker

FIELD CROPS

Crop	Year	Harvested Acreage	Per Acre	Total	Unit	Per Unit	Total
Hay, Alfalfa	2010	1072	4.62	4,957	Ton	\$98.00	\$486,000.00
	2009	259	5.73	1,483	Ton	\$129.54	\$192,000.00
Hay, Other	2010	5,214	1.67	8,705	Ton	\$100.87	\$878,000.00
	2009	4,480	1.8	8,061	Ton	\$82.59	\$666,000.00
Range Pasture	2010	181,541			Acre	\$16.69	\$3,030,000.00
	2009	183,000			Acre	\$14.25	\$2,608,000.00
Miscellaneous	2010	220	Includes corn silage, barley, oats, wheat, irrigated pasture, etc.				\$88,000.00
	2009	293					\$265,000.00
TOTAL	2010	188,047					\$4,482,000.00
	2009	188,032					\$3,731,000.00

FRUIT & NUT CROPS

Crop	Year	Bearing Acreage	Per Acre	Total	Unit	Per Unit	Total
Grapes (WINE) Red	2010	1,635	5.16	8,434	Ton	\$1,020.28	\$8,605,000.00
	2009	1,752	4.85	8,503	Ton	\$1,149.95	\$9,778,000.00
Grapes (WINE) White	2010	602	6.88	4,143	Ton	\$679.22	\$2,814,000.00
	2009	658	5.49	3,607	Ton	\$1,177.43	\$4,247,000.00
Misc. Fruit & Nut	2010	316	Includes olives, pistachios, strawberry, etc.				\$575,000.00
	2009	213					\$119,000.00
Total	2010	2,553					\$11,994,000.00
	2009	2,623					\$14,144,000.00

VEGETABLE CROPS

Crop	Year	Harvested Acreage		Total
Miscellaneous Vegetables	2010	82	Includes broccoli, cabbage, corn, fava beans, leaf lettuce, greens, pumpkins, tomatoes, squash, etc.	\$897,000.00
	2009	83		\$838,000.00

LIVESTOCK & POULTRY

Item	Year	No. of Head	Total Weight	Unit	Per Unit	Total
Cattle & Calves	2010	12,855	66,085	Cwt.	Various	\$6,231,000.00
	2009	8,342	50,627	Cwt.	Various	\$4,650,000.00
Misc. Poultry and Livestock Products	2010	Includes rabbits, sheep, wool, lambs, hogs, bees and apiary products				\$216,000.00
	2009					\$125,000.00
Total	2010					\$6,447,000.00
	2009					\$4,775,000.00

NURSERY PRODUCTS

Item	Year	House Sq. Ft.	Field Acres	Quantity Sold	Unit	Per Unit	Total
Ornamental Trees and Shrubs	2010	705,150	158	865,545		Various	\$10,190,000.00
	2009	705,150	163	879,676		Various	\$12,564,000.00
Miscellaneous Nursery Products	2010	251,800	66	Includes bedding plants, indoor decoratives, peonies, christmas trees, cut flowers, etc.			\$1,286,000.00
	2009	311,800	10				\$1,115,000.00
Total	2010	956,950	224				\$11,476,000.00
	2009	1,016,950	173				\$13,679,000.00

SUSTAINABLE AGRICULTURE REPORT

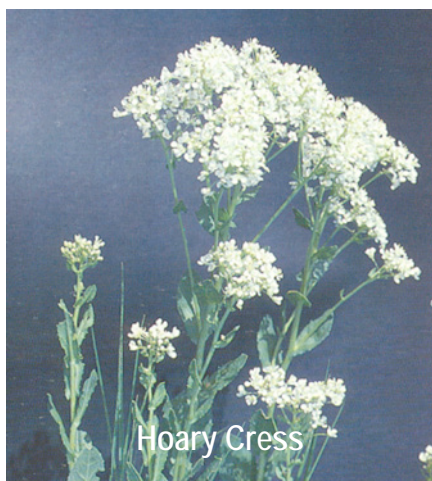
COUNTY BIOLOGICAL CONTROL

Biological control is the reduction of pest populations through the use of natural enemies such as parasitoids, predators, pathogens, antagonists, or competitors.

PEST	AGENTS	SCOPE OF PROGRAM
YELLOW STARTHISTLE (<i>Centaurea solstitialis</i>)	Bud Weevil (<i>Bangasternus orientalis</i>)	Countywide
	Seedhead Gall Fly (<i>Urophora sirunaseva</i>)	Countywide
	Seedhead Fly (<i>Chaetorellia</i> spp.)	Countywide
	Hairy Weevil (<i>Eustenopus villosus</i>)	Countywide
	Rust Fungus (<i>Puccinia jaceae</i> var. <i>solstitialis</i>)	Released in 3 Sites

PEST MANAGEMENT AND ERADICATION

Weeds (Common Name/Scientific Name)	Control Method	Scope of Program (no. Sites/Treated Acres)
Puna Grass <i>Stipa brachychaeta</i>	Monitoring	1 Site / 2 Acres
Golden Thistle <i>Scolymus hispanicus</i>	Monitoring	5 Sites / 720 Acres
Iberian Thistle <i>Centaurea iberica</i>	Monitoring	1 Site / 10 Acres
Dalmatian Toadflax <i>Linaria genistifolia</i>	Mechanical	1 Site / 1 Acre
Japanese Dodder <i>Cuscuta japonica</i>	Mechanical	20 Sites / .3 Acre
Artichoke Thistle <i>Cynara cardunculus</i>	Chemical/Mechanical	Various Sites / 34 Net Acres
Purple Star Thistle <i>Centaurea calcitrapa</i>	Chemical/Mechanical	Various Sites / 34 Net Acres
Russian Knapweed <i>Acroptilon repens</i>	Mechanical	1 Site / .2 Acre
Lens-Podded Hoary Cress <i>Cardaria chalepensis</i>	Chemical/Mechanical	5 sites / 6 Net Acres
Hoary Cress <i>Cardaria draba</i>	Chemical	1 sites / 1 Acre
Skeletonweed <i>Chondrilla juncea</i>	Mechanical	1 site / 0.1 Acre
White Horsenettle <i>Solanum elaeagnifolium</i>	Chemical/Mechanical	3 sites / 0.5 Net Acre
Invasive Spartina <i>Spartina</i> spp.	Chemical	4 site / 25 Acres



Hoary Cress



Purple Star Thistle



Dalmatian Toadflax

PEST EXCLUSION

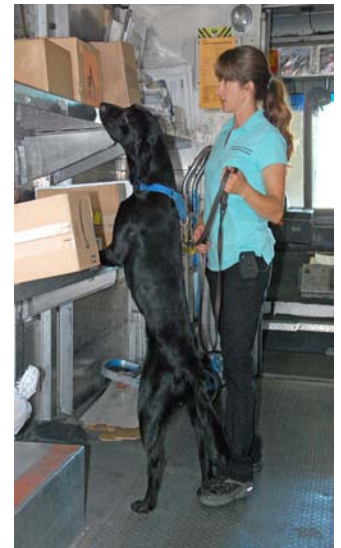
Pest exclusion is the first line of defense to prevent detrimental, non-native pests from entering the county. The County Agriculture Department inspects shipments of plant products and other high-risk articles daily at various shipping terminals to enforce quarantines intended to prevent the introduction of harmful pests.

TYPE OF SHIPMENT	SHIPMENTS INSPECTED	SHIPMENTS REJECTED
PARCEL CARRIERS	7,341	138 (124 pests found)
TRUCKS	381	16 (24 pests found)
HOUSEHOLD GOODS	144	1 (no viable pests found)
NURSERY (Glassy-winged Sharpshooter)	3,653	2 (egg masses)
LIGHT BROWN APPLE MOTH		
COMPLIANCE INSPECTIONS		647
TRAPS IN NURSERIES		53 (No female adults found)
BUSINESSES UNDER COMPLIANCE AGREEMENT		
CROP PRODUCERS		7
COMMUNITY GARDENS/DIRECT MARKETS		33
RETAIL AND PRODUCTION NURSERIES		179
GREENWASTE FACILITIES		40

Alameda County Agriculture Canine Detection Team

In 2010, Alameda County acquired a Canine Inspection Team, one of 9 counties in California to be selected for the statewide Canine Detection Program. Agricultural Biologist Lisa Centoni and her canine partner 'Cosmo' completed a rigorous 10 week training course at the USDA National Detector Dog Training Center in Georgia and began their work in various terminal facilities throughout the county in December of 2010.

Cosmo and Lisa are now one of 13 canine/handler teams working throughout California. Parcel delivery facilities, such as FedEx, UPS, and the US Postal Service can unknowingly be a point of entry for unwanted insects, weeds and plant diseases into California. Alameda County agricultural inspectors perform daily inspections throughout the county at parcel delivery facilities visually inspecting marked packages for pests and enforcing quarantine requirements for packages moving into and through California.



California law requires packages containing plant material to be labeled and properly identified, however unmarked agricultural packages can slip through undetected. Canine teams are used in the inspection process to increase the likelihood that unmarked packages will be found. Detecting these shipments and preventing them from being distributed is a critical part of the Pest Exclusion Program in California. Since the program began in 2008, starting with just two Canine Teams, the California Agriculture Canine Detection Teams have intercepted a total of 170 serious pests prohibited entry into California.

PEST DETECTION

Pest detection is the second line of defense to prevent detrimental, non-native pests from becoming established within a large area of the county or state. Insect traps are placed and monitored to detect whether a pest is present in a particular location.

TARGET PEST	HOSTS	NUMBER OF TRAP SERVICINGS
Mediterranean Fruit Fly	Fruit trees	88,715
Mexican Fruit Fly	Fruit trees	
Melon Fruit Fly	Vegetable gardens	
Oriental Fruit Fly	Fruit trees	
Other Fruit Flies	Fruit trees and vegetables	
Gypsy Moth	Shade trees	
Japanese Beetle	Turf and Roses	
European Pine Shoot Moth	Pine trees	
Trogoderma Beetle	High-hazard articles	
Glassy-winged Sharpshooter	Landscape and nursery plants	13,889
Light Brown Apple Moth	Ornamental and commercial plants	3,079
Asian Citrus Psyllid	Ornamental and nursery plants	2,826
European Grapevine Moth	Vineyards	2,218

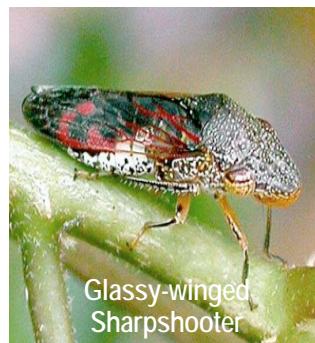
Finds of targeted pests in 2010 included 2,554 Light Brown Apple Moths throughout the county. The County Agriculture Department deployed a total of 6,937 traps to detect the presence of non-native insect pests, and serviced the traps 110,727 times during the year.



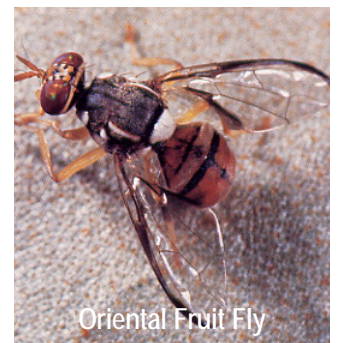
Gypsy Moth



European Pine Shoot Moth



Glassy-winged Sharpshooter



Oriental Fruit Fly



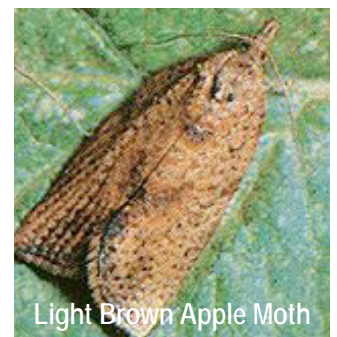
European Grapevine Moth



Mexican Fruit Fly



Mediterranean Fruit Fly



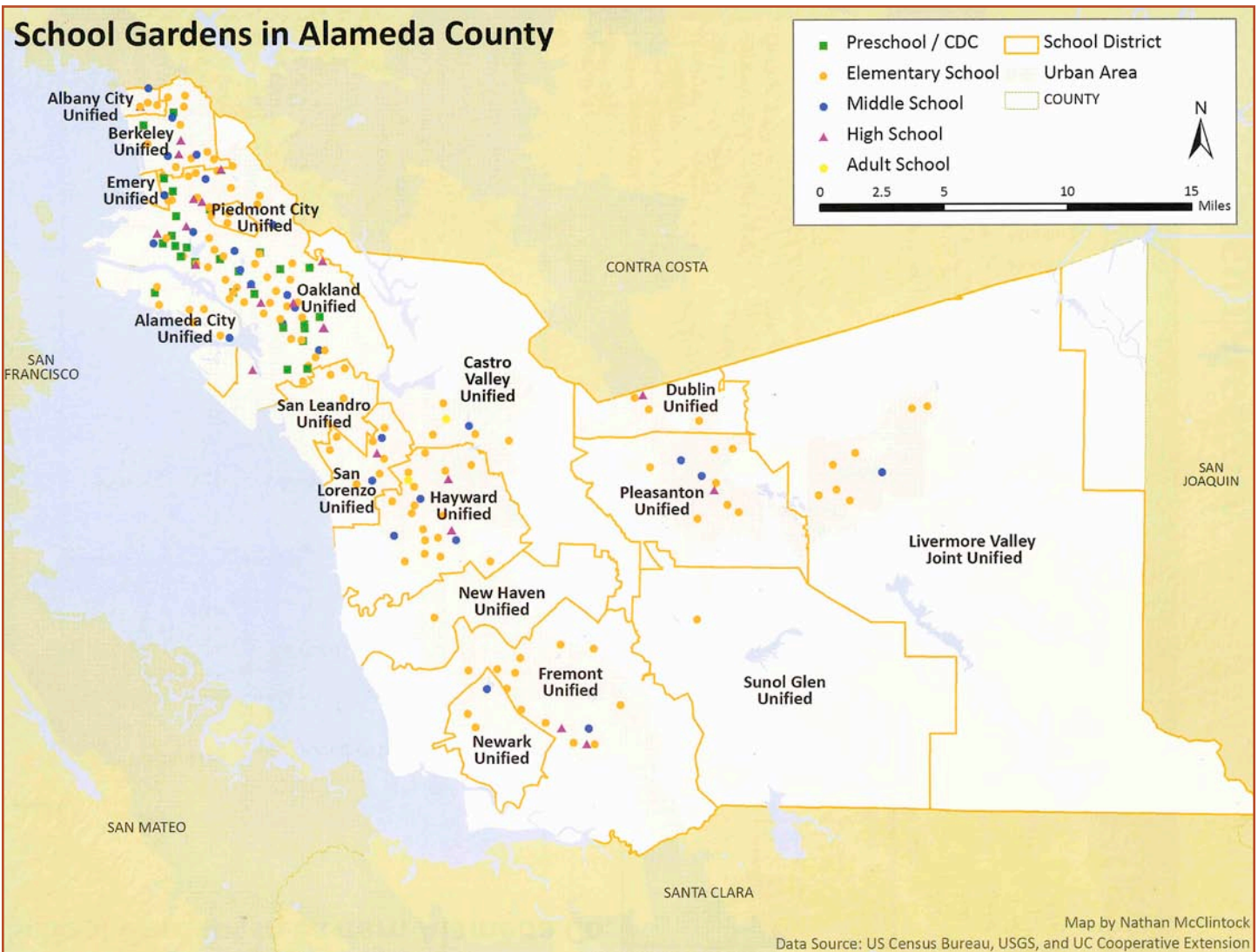
Light Brown Apple Moth

ORGANIC FARMING

CROP	REGISTERED PRODUCERS	ESTIMATED ACREAGE
Miscellaneous	9	200

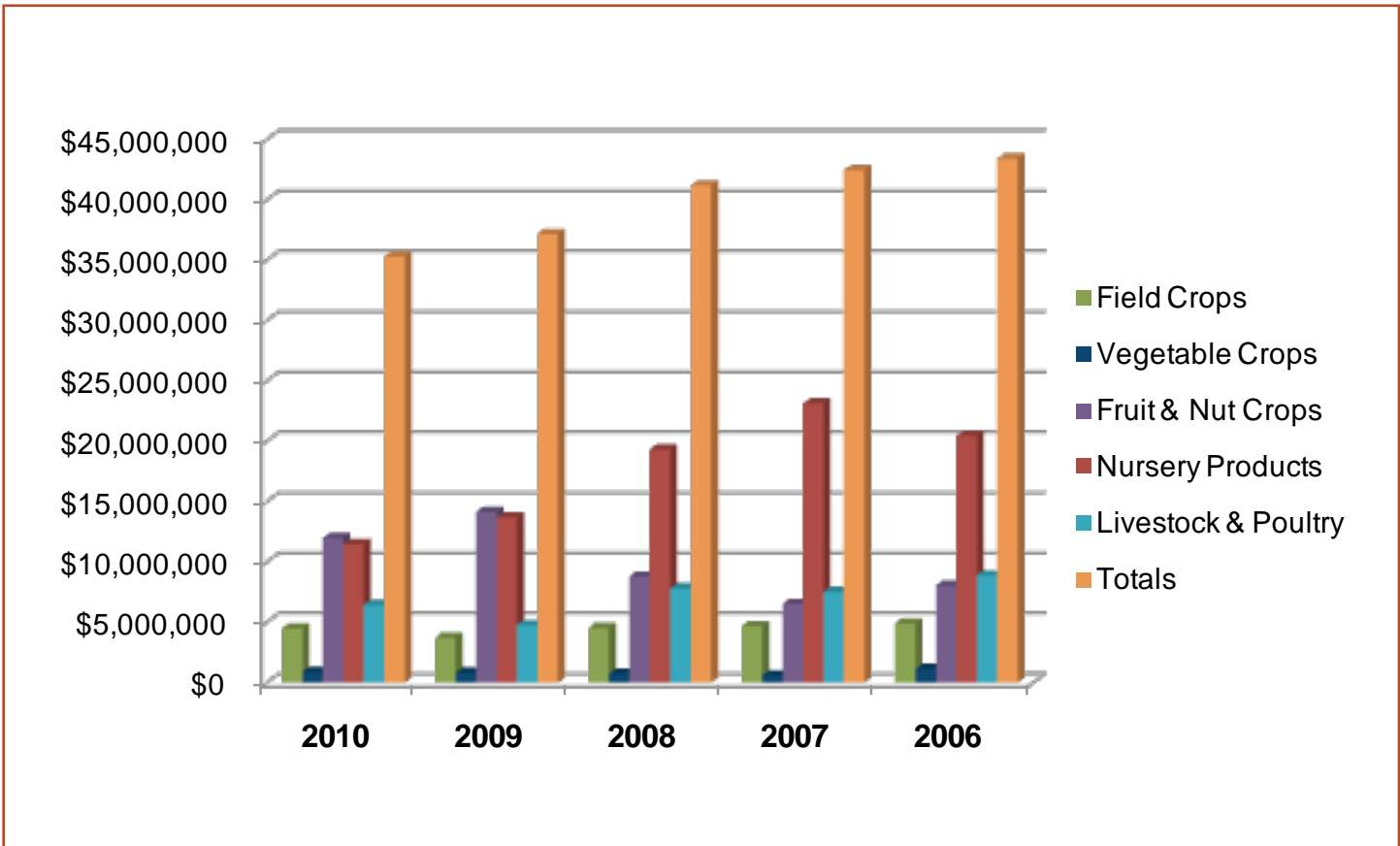
URBAN FARMING

TYPE	NUMBER	ESTIMATED ACREAGE
Community Gardens	19	46 acres
School Gardens	215	66 acres
Certified Farmers Markets	34	597 stalls
Certified Producers	21	109 acres



FIVE YEAR COMPARISON SUMMARY

	2010	2009	2008	2007	2006
Field Crops	\$4,482,000	\$3,731,000	\$4,538,000	\$4,674,000	\$4,883,000
Vegetable Crops	897,000	838,000	745,000	601,000	1,153,000
Fruit & Nut Crops	11,994,000	14,144,000	8,772,000	6,516,000	8,049,000
Nursery Products	11,476,000	13,679,000	19,317,000	23,130,000	20,451,000
Livestock & Poultry	6,447,000	4,775,000	7,813,000	7,520,000	8,876,000
Totals	35,296,000	\$37,167,000	\$41,185,000	\$42,441,000	\$43,412,000



EQUINE STATISTICS

Commercial use of horses is now considered an agricultural use for purposes of the Williamson Act. This category includes the breeding and training of race horses, competition horses, and ranch horses for the purpose of commercial sale.

TYPE	NUMBER
Race Horses	2,000
Competition Horses	1,000
Ranch Horses	1,500
Recreation/Pleasure*	5,000

*Ineligible for Williamson Act as being of economic benefit to agriculture; however, this category of horses is recognized for its ancillary benefit.

General Alameda County Information

County Seat	Oakland
County Population, 2010.....	1,521,157
Land Area (Square Miles)	737.5
Water Area (Square Miles)	83.8
Persons per Square Mile.....	2,062

14 Incorporated Cities

Alameda • Albany • Berkeley • Dublin • Emeryville • Fremont • Hayward
Livermore • Newark • Oakland • Piedmont • Pleasanton • San Leandro • Union City

6 Unincorporated Areas

Ashland • Castro Valley • Cherryland • Fairview • San Lorenzo • Sunol

Total Assessed Property (Local Roll – 2010) ...	\$199,686,160,435
Total Harvested Crop Acreage (2010)	190,906
Major Roads	Interstate 80, Interstate 580, Interstate 680, Interstate 880, Highway 238, Highway 84, Highway 92, Highway 13
Elevation	Sea level to 3,817 ft. at Rose Peak in the southern part of the County
Average Climate	Mild winters and cool summers near the Bay. The eastern portion of the County is moderately warmer; high temperatures in the Livermore Amador Valley average 90°F in July.

MISSION STATEMENT

MISSION

To enrich the lives of Alameda County residents through visionary policies and accessible, responsive, and effective services

VISION

Alameda County is recognized as one of the best counties in which to live, work and do business.

VALUES

Integrity, honesty and respect fostering mutual trust.

Transparency and accountability achieved through open communications and involvement of diverse community voices.

Fiscal stewardship reflecting the responsible management of resources.

Customer service built on commitment, accessibility and responsiveness.

Excellence in performance based on strong leadership, teamwork and a willingness to take risks.

Diversity recognizing the unique qualities of every individual and his or her perspective.

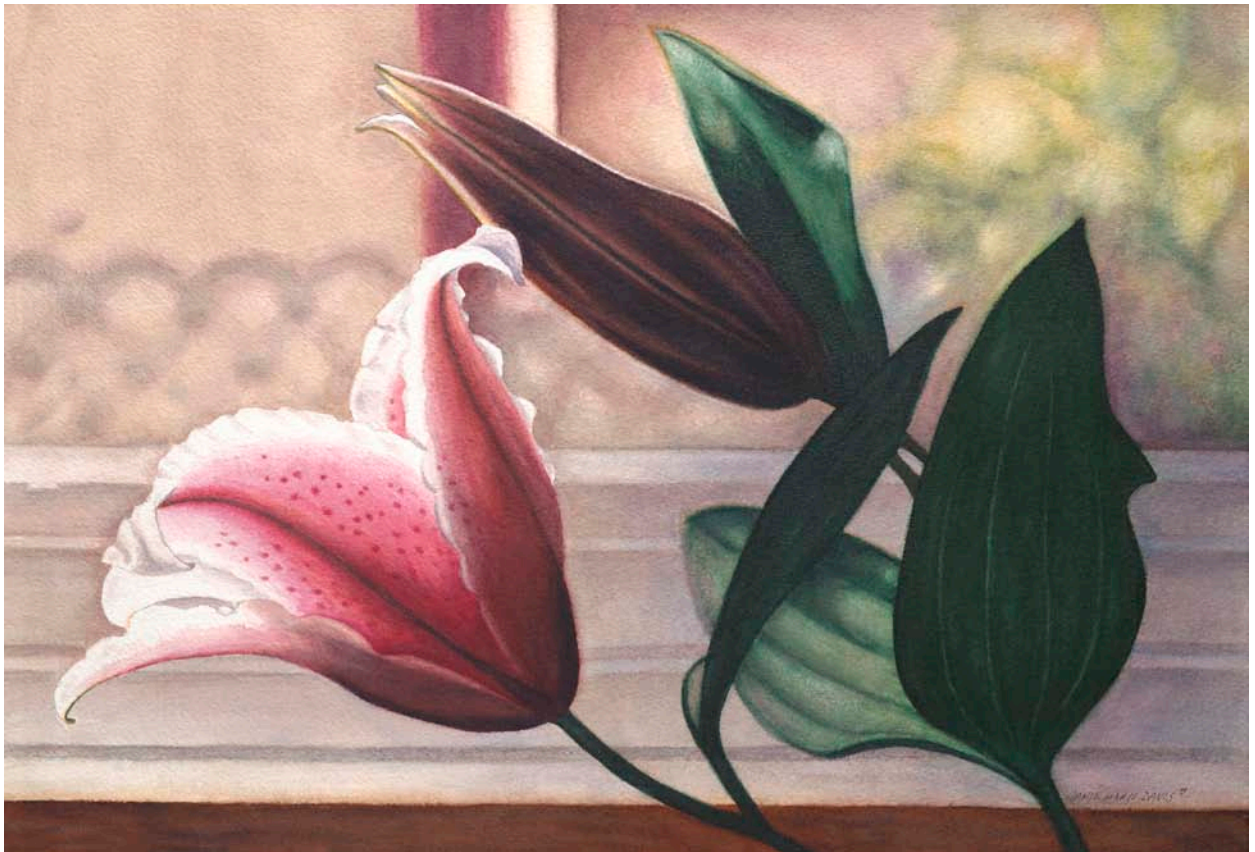
Environmental stewardship to preserve, protect and restore our natural resources.

Social responsibility promoting self-sufficiency, economic independence and an interdependent system of care and support.

Compassion ensuring all people are treated with respect, dignity and fairness.



Pink Magnolias



Lily Near the Window

As mentioned in the opening letter, Janie Chambers (artistically known as Janie Marie Davis), will be retiring in September after 30 years with Alameda County. Janie has been working as a graphic designer and mapping specialist for the last 10 years at the Alameda County Community Development Agency. One of her most enjoyable and creative jobs as a designer was to produce the annual Crop Report for the Department of Agriculture/Weights and Measures. She will be moving back to Alabama to begin her career as a professional watercolorist and freelance graphic designer.

Alameda County
Community Development Agency
Agricultural Commissioner
Sealer of Weights & Measures

224 W. Winton Avenue, Room 184, Hayward, California 94544
510-670-5232 • Fax 510-783-3928



**ADHERENCE TO THEME
INVITATIONAL EXHIBIT
1st**



Farm Fresh